




TAROT GUIDEBOOK

Based on the tarot interpretations
of Arthur Edward Waite

Modified, expanded, and edited
by Philip Young, PhD



Introduction

Reading Tarot cards can reveal insights into your past, present, or future. The premise is simple: the Querent asks a question, and then the Reader draws the cards and interprets the results.

Tarot reading has been used for divination since the 1700s, and every Reader develops his or her own methods for interpreting the cards. There are some fundamentals, but Readers are encouraged to explore and develop their own unique approach.

The Deck

The Tarot deck contains seventy-eight cards: twenty-two Major Arcana and fifty-six Minor Arcana.

The Major Arcana represent the journey through life, and the archetypal stages that everyone experiences. Everyone begins life as the Fool, and ends life as the Fool.

The Minor Arcana represents the actions, thoughts, feelings, and material struggles that we all encounter in our lives. The Querent seeks to learn from every experience.

The Minor Arcana are made up of four suits and fifty-six cards, like a traditional deck of playing cards. Face cards consist of Knave/Page, Knight, Queen, and King. Each suit

is associated with one of the elements. Clubs/Wands/Staves corresponds to Fire, Cups to Water, Coins/Pentacles/Disks to Earth, and Swords/Spears/Arrows to Air. The cards in each of the suits take on the symbolism and essence of the corresponding element: Fire/Action, Water/Emotions, Earth/Work, and Air/Thought.

Spreading the Cards

A spread is a layout for the Tarot cards which provides a framework for the reading. Spreads often follow a predefined theme where the position of the cards is relevant to how they are interpreted.

There are numerous different types of spreads. Certain spreads tend to work well for different types of questions. This guide will provide a starter spread, but you can research and find many predefined spreads. As you become more experienced, consider developing your own unique spreads.

Three-Card Spread

The past/present/future three-card spread is the best and most commonly used starting spread. This simple spread is ideal for novice Readers and simple questions. Cards are drawn and read in the following order: 1) Past, 2) Present, and 3) Future.



Past



Present



Future

1. **The Past:** This card symbolizes the Querent's past experiences, recent or distant, that pertain to the Querent's question.
2. **The Present:** This card represents the Querent's current situation.
3. **The Future:** This card indicates a possible future outcome for the Querent, or a goal the Querent should strive for regarding their question or issue. The Querent can have an impact on his or her future via their thoughts and actions.

Tips

Become familiar with your deck. Buy a journal and take a page to write about each card, starting with the Fool, in the Major Arcana, and going through all seventy-eight cards, in sequence.

Look at the pictures and use the explanations in this booklet to connect each card with one of your life experiences. Since the cards are archetypal, you have experienced all seventy-eight at least once. Perhaps you've experienced certain cards repeatedly. Write your corresponding life experience with each card in your journal.

The explanations in this booklet refer to the card being “upright” or “reversed”. After shuffling, drawing, and turning over the cards, some may

be upright while others will be upside down (or reversed). Reversed cards turn the meaning “upside down.”

Pay attention to the symbolism in the artwork; the symbolism enhances, and provides nuance, to the meaning of the cards.

Tarot cards are not deterministic and life is not fated. The future is never set. The Querent can always alter his or her future by changing their course of action, changing their thoughts, or adjusting their feelings.

The Major Arcana

The Fool (0)



Meaning: The Fool represents a leap of faith, the beginning and ending of the Major Arcana journey we all take through life. We are the Fool; therefore, the Fool archetype is about curiosity and open-mindedness, going with the flow of life, and managing our way through the unknown.

Symbolism: A young man and his dog travel the land together; he looks out at the land, full of possibilities. All he has or needs is what he carries with him.

Upright: optimism, a journey without a destination, a new beginning, curiosity, and potential

Reversed: foolishness, gullibility, and ignorance

The Magician (I)



Meaning: The Magician represents choices and creative problem-solving, a connection between imagination and reality. The Magician archetype is the first encounter for the Fool, indicating that we all must make crucial decisions on our life journey.

Symbolism: An Egyptian priest performs a ceremony on an auspicious day, represented by the shooting star. He has all the objects of the four suits to help him perform his ritual.

Upright: choices, problem-solving, diverse knowledge, solutions, and cleverness

Reversed: deception, conning, mistakes, something broken beyond repair, and failure

The High Priestess (II)



Meaning: The High Priestess represents the knowledge and enlightenment that we attain overcoming difficulties. The High Priestess archetype is the second encounter for the Fool, indicating that we must learn about our intuition, how to trust it, and when to seek out guidance from others.

Symbolism: A young woman wizened by difficult experiences awaits acolytes who come to her for guidance. The pomegranates are the fruit of the underworld and the scroll in her lap represents learned knowledge in life. She knows both life and death and uses that knowledge to help others.

Upright: divination, wisdom from experience, insight, and counseling

Reversed: gossip, bad advice, incomplete knowledge, and misrepresentation

The Empress (III)



Meaning: The Empress represents the feminine divine, the essence of beauty, abundance, and nourishment. The Empress archetype is the third encounter for the Fool, teaching you about the natural world, how to care for the world, how to nurture yourself, and how to care for others.

Symbolism: Hathor, the Goddess of Fertility, sits on her throne and oversees the harvest. She nurtures the land to give abundance to civilization.

Upright: nurturing, abundance, the feminine divine, and sovereignty over the natural order

Reversed: hardships, scarcity, bareness, and neediness.

The Emperor (IV)



Meaning: The Emperor represents the masculine divine, the essence of command, order, and power. The Emperor archetype is the fourth encounter for the Fool, teaching us how to establish order from chaos, how to shape the natural world to our needs, and how to build civilization.

Symbolism: Horus, the Sky God, watches over the land to make sure civilization prospers through trade, technology, medicine, and law. His staff is the Ankh, the symbol of Life, which identifies him as the God who guides rulers and punishes wrong-doers.

Upright: authority, the rule maker, order, stability, and sovereignty over society and civilization

Reversed: abuse of power, cruelty, dictatorship, and narcissism

The Hierophant (V)



Meaning: The Hierophant represents wisdom attained through scholarship and exploring the world, the knowledge and potential wisdom we attain in our effort to make sense of life. The Hierophant archetype is the fifth encounter for the Fool, indicating that we need to go beyond intuition and emotion, and use intellect and experience to solve some problems. Or, we need to find someone with those qualities to help us.

Symbolism: A priest sits in his seat of authority to resolve problems and offer sacraments. Two supplicants kneel before him for a blessing. His staff is a symbol of his station and authority.

Upright: wisdom, authority, knowledge, doctrine, and advice

Reversed: arrogance, elitism, hypocrisy, and charlatanism

The Lovers (VI)



Meaning: The Lovers represents partnership, especially a profound connection with someone that is both intimate and romantic. The Lovers archetype is the sixth encounter for the Fool, indicating that we cannot fully experience life until we allow someone to connect with someone us intimately and deeply.

Symbolism: The goddess Isis oversees the union of two young lovers. The trees bearing fruit represent the fertility promised by the commitment.

Upright: commitment, status through union, connection, and soul mate

Reversed: jealousy, unfaithfulness, arguments, and separation or divorce

The Chariot (VII)



Meaning: The Chariot represents willpower and drive, the intense focus we need to establish our identities and stand out in important and useful ways. The Chariot archetype is the seventh encounter for the Fool, teaching us how important it is to have conviction and intensity in our lives.

Symbolism: A warrior is at the ready. The two sphinx that pull his chariot are at rest, but alert, awaiting his commands, and ready to spring into action when needed.

Upright: victory, willpower, intensity, drive, and control

Reversed: anger, delay, indecision, and interference

Strength (VIII)



Meaning: Strength represents our fortitude to live life, overcome struggles, and persevere; the journey through life will require strength to live fully and completely. Strength, as an archetype, is the eighth lesson for the Fool, showing us that life is a marathon and not a sprint. We must all find the strength within that will help us survive and thrive in life.

Symbolism: A regal Egyptian woman greets a Lion and he greets her. Together they represent the meeting of civilization and instinct, and two different strengths that culminate in greater power when they honor each other.

Upright: power, courage, compassion, and gentle strength

Reversed: weakness, anger, and abuse of power

The Hermit (IX)



Meaning: The Hermit represents our individual pursuit for personal truth in a world of competing truths. The Hermit archetype is the ninth encounter for the Fool, teaching us that sometimes we must detach from the flow of life to discover ourselves, bringing what we learn in isolation back into the world of social connections.

Symbolism: A young man with a staff and oil lamp travels the desert in search of personal truth, which, once found, will be part of his life philosophy when he returns to civilization.

Upright: introspection, discovery, wisdom, truth-seeking, and taking time away from society

Reversed: loneliness, escapism, depression, and being cast out

Wheel of Fortune (X)



Meaning: The Wheel of Fortune represents experiences and circumstances outside our control. The Wheel of Fortune archetype is the tenth encounter for the Fool, indicating that we exist in a dance between Fate and Free Will. This card teaches the lessons of Fate, the external world, and how others with more power than us force us to react.

Symbolism: Two creatures and a hybrid man/beast are on the wheel, indicating the ever-flowing cycle of life. The wheel keeps turning and we are all on it for a ride.

Upright: what is inevitable, destiny, and the passage of time

Reversed: misfortune, powerlessness, and unpleasant circumstances

Justice (XI)



Meaning: Justice represents detached decision-making, logic, and the power of knowledge outside of emotions. Justice, as an archetype, is the eleventh teacher for the Fool, showing us the importance of objectivity and analysis for determining outcomes and making important decisions. Life can be fair if we act with integrity.

Symbolism: A priest or lawgiver sits ready to dispense justice. The scales are symbols of fairness and balance, and the sword is a symbol of decisiveness. The pillars, his clothing, and his head piece are all objects of his authority and learnedness.

Upright: detached decision-making, responsibility, consequences, cause and effect, and logic

Reversed: injustice, missing information, indecision, and bureaucracy

The Hanged Man (XII)



Meaning: The Hanged Man represents knowing sacrifice, when we realize we must accept a short-term difficulty for a long-term gain. The Hanged Man archetype is the twelfth encounter for the Fool, showing us the importance of devotion, surrender, and sacrifice as ways forward that are just as powerful as the need to act represented by the Chariot card.

Symbolism: A young man hangs upside down, but appears relaxed and calm. He knows he must wait and learn by being patient, as well as by changing his perspective, which is what happens when you view the world from a reversed position. The tree is healthy and sturdy, so he does not have to worry about it falling over from his weight.

Upright: knowing sacrifice, change in perspective, and patience

Reversed: helplessness, impatience, confusion, and selfishness

Death (XIII)



Meaning: Death represents endings in the cycle of life, and the power of regeneration. Death, as an archetype, is the thirteenth encounter for the Fool, reminding us that life is finite, which helps us appreciate how well or poorly we are doing in our pursuit of life experience and soul growth.

Symbolism: The skeletal figure of death harvests souls with his scythe; the severed heads are the newest results of a crop that needed threshing. The sun is setting and the dog is pointing in the direction death needs to go to keep doing his work.

Upright: death/rebirth, transformation, inevitability, and cycles

Reversed: arrogance, depression, hopelessness, and severe grief

Temperance (XIV)



Meaning: Temperance represents balance and equilibrium that has the chance to develop with greater and greater life experience. Temperance, as an archetype, is the fourteenth encounter for the Fool, indicating that we all need to step back, from time to time, and assess where we are so we can determine if we are in or out of balance.

Symbolism: The god Horus pours water between two cups. With his divine power, the water flows downward and upward. He stands before a calm pool of water. These symbols display the life-giving importance of water, which helps bring life to an arid land.

Upright: calm, health, well-being, balance, common ground, and harmonious action

Reversed: imbalance, disruption, anxiety, frustration, and pettiness

The Devil (XV)



Meaning: The Devil represents consequences we face as our choices become more and more significant the farther into life we travel. The Devil archetype is the fifteenth encounter for the Fool, teaching us that we are responsible for our lives and our choices. If we make selfish choices that harm others, we will not enjoy the outcomes.

Symbolism: Set, the god of war and chaos, leads prisoners through a dark realm. He embraces and punishes the souls of the corrupt. He holds a flame in one hand and a serpent in the other, symbols for purging and poisoning.

Upright: self-interest, temptation, consequences, and choice

Reversed: unwise choices, lust, wanton abandon, and manipulation

The Tower (XVI)



Meaning: The Tower represents sudden, unexpected change that takes something we have built over time and breaks it down forcefully to cause us to start over or reset. The Tower, as an archetype, is the sixteenth encounter for the Fool, teaching the lesson that life is a construct and, at any time, it can be “blown up”, forcing us to make unexpected adjustments.

Symbolism: A pyramid is struck by lightning and two workers fall to their death unexpectedly. Even the most powerful structures can be reduced to rubble by nature, leaving humans at the mercy of the unexpected, even as they try to build structures to withstand the chaos.

Upright and Reversed: unexpected change, sudden catastrophe, and shocks to the system

The Star (XVII)



The Star

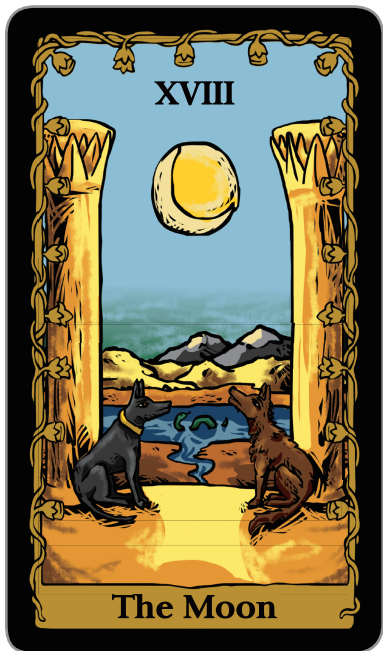
Meaning: The Star represents hope and vision for the future. What do we see as our life's purpose, and how do we get to it? The Star, as an archetype, is the seventeenth encounter for the Fool, indicating that we all need hope and optimism about the future. We need to have dreams to enjoy this life.

Symbolism: A woman pours water into a pool and onto the land while looking at a guiding star. The star is her integrity; pouring water into the pool and onto the land show respect for the necessity of the water.

Upright: hope, inspiration, promise, purpose, and faith

Reversed: doubts, confusion, delusion, and despair

The Moon (XVIII)



Meaning: The Moon represents the feelings we need to explore and express. The Moon, as an archetype, is the eighteenth encounter for the Fool, illuminating our deepest feelings so we can understand the emotional framework that is reinforced, suppressed, and shaped by our family and closest relationships.

Symbolism: A full moon, with the crescent moon inside, shows the different phases of the moon in a single symbol. The moon sits between two pillars and two dogs over a waterway leading to a lake. This position indicates our need to balance and navigate our emotions.

Upright: dreams, positive emotions, intuition, and soul purpose

Reversed: delusion, nightmares, negative emotions, and despair

The Sun (XIX)



Meaning: The Sun represents revelation and the light of truth. The Sun, as an archetype, is the nineteenth teacher for the Fool, showing us the lesson of honest revelation and how we deal with clear truths in our lives. What do you learn when you see a situation or a person for what they really are?

Symbolism: The Sun god Ra shines his light on a young farmer, who feels blessed to know how to till the land and grow food. The bull he rides is a symbol of stability and the power of the land to produce.

Upright: revelation, greatness, vitality, and truth

Reversed: excessive pride, arrogance, blocked action, and lies

Judgement (XX)



Meaning: Judgement represents significant and life-changing decisions, as well as the judgements from the world around us. Judgement, as an archetype, is the twentieth lesson for the Fool, teaching us the need to use all we have learned through encounters with others, and the lessons we need to make the most important choices in life.

Symbolism: Osiris calls the dead to rise so they can be judged. If they are deemed worthy, they will reincarnate into a better life; if not, they will return to a life even more difficult than the one they just left.

Upright: deciding for others, being judged, consequences, and closure

Reversed: prejudging, stereotyping, lazy thinking, and abuse of power

The World (XXI)



Meaning: The World represents the ending of a cycle to prepare for a new, repeating journey for the Fool (us). The World, as an archetype, is the twenty-first encounter for the Fool, showing us that life is constantly changing and we are supposed to build on our experiences. In this ending is another beginning.

Symbolism: A man celebrates the completion of a long journey, made with great effort. The heads of the beasts, and the human head, represent the four fixed signs of the Zodiac: the bull for Taurus, the lion for Leo, the eagle for Scorpio, and the human head with wings for Aquarius.

Upright: fulfillment, completion, conclusion, the sum of your efforts, and success

Reversed: stagnation, failure, and final obstacle

The Minor Arcana

The Suit of Wands

The Suit of Wands is associated with the element of fire, representing passion, energy, willpower, and strength. The cards of this suit provide archetypes of human actions and reactions. The Fool takes his or her journey through this suit to make choices, seek adventure, and deal with challenges.

Ace

Meaning: You need to be inspired or excited; something or someone needs your spark.

Symbolism: A divine being holds a single staff over the desert landscape as a symbol of new energy for the land.

Upright: inspiration, and spark

Reversed: lacking energy, and hinderance.



Two

Meaning: You need to choose a direction and take steps to move forward.

Symbolism: A man ready to set out on his journey holds a sphere in one hand and staff in the other, representing new possibilities. The staff behind him represents what he has already accomplished.

Upright: determination, and confidence

Reversed: fear, and indecision



Three

Meaning: The path is clear; you need to invest your time and energy to succeed.

Symbolism: The man holds one staff in each hand, while one staff is behind him. He has a destination charted and is ready to embark on his adventure.

Upright: adventure, and optimism

Reversed: delays, and broken promises



Four

Meaning: Gather friends and family around you and celebrate together.

Symbolism: Two figures raise their arms in joy while they gather near the four staffs to celebrate an important day or major accomplishment.

Upright: celebration, and socializing

Reversed: unfinished work, and no time to celebrate



Five

Meaning: Conflict and competition are necessary to keep moving forward.

Symbolism: Young men challenge one another; they use competition and conflict to determine who is strongest and who will lead them.

Upright: conflict, or competition

Reversed: poor leadership, and trouble-making



Six

Meaning: Victory and success are yours; be sure to act with dignity.

Symbolism: A successful leader takes his followers across the land; his staff has a garland of victory at the top.

Upright: victory, and desires fulfilled

Reversed: public humiliation, and failure



Seven

Meaning: You are right; hold your ground. Any lack of integrity will be your downfall.

Symbolism: A warrior defends the land, using valor to hold off his attackers.

Upright: courage, and valor

Reversed: treachery, and lack of conviction



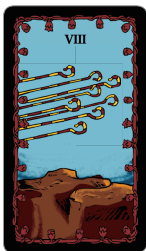
Eight

Meaning: Be focused and intense; let nothing distract you from your goal.

Symbolism: Eight staffs point in the same direction, representing clarity of intent and focus on creativity.

Upright: intensity, and drive

Reversed: frustration, and confusion



Nine

Meaning: You have a duty to uphold; others look to you as a role model.

Symbolism: An injured warrior remains steady in the face of adversity, resolved to set an example for others.

Upright: loyalty, and discipline

Reversed: disloyalty, and stubbornness



Ten

Meaning: It is time to say “no” and set limits; you do not have enough energy right now.

Symbolism: Ten wands weigh heavily on the figure carrying them, but the situation calls for persistence and sacrifice; the wands are a burden that must be carried.

Upright: obligations, and devotion

Reversed: exhaustion, and oppression



Page

Meaning: You have a lot of excitement, but you need to find focus.

Symbolism: A young man, full of energy, waits to be inspired and given direction.

Upright: enthusiasm, and creativity

Reversed: unpredictability, and foolishness



Knight

Meaning: You need to go on an adventurous quest; get out of your routine and explore.

Symbolism: A warrior rides a stallion, carrying his staff on a quest for adventure.

Upright: driven, and passionate

Reversed: headstrong, and reckless



Queen

Meaning: You need to show confidence; if not, fake it until you feel it!

Symbolism: A powerful confident woman awaits supplicants for her favor. The black cat symbolizes detachment, and the flower in her hand, fertility.

Upright: confident, and honorable

Reversed: insecure, and vindictive



King

Meaning: Show others how it is done; you need to lead by doing.

Symbolism: A powerful man is seated on a throne waiting for the right moment to act; he holds a sphere in one hand, which symbolizes his power in the world.

Upright: role model, and independence

Reversed: selfish, and impatient



The Suit of Cups

The Suit of Cups is associated with the element of water, representing emotions, feelings, and relationships. This symbol indicates what is happening in the heart rather than the head.

Ace

Meaning: Open your heart to a new relationship or reinvigorate an old one.

Symbolism: A divine hand holds a cup above the land; the water pouring out forms a pool and provides nourishment to the desert.

Upright: new love, and new emotional connection

Reversed: misplaced feelings towards someone, and emotional immaturity



Two

Meaning: Enjoy a mutual attraction and shared positive feelings with someone.

Symbolism: Two lovers exchange cups and vows while a spirit animal watches over the ceremonial connection.

Upright: attraction, and connection

Reversed: unrequited love, and rejection



Three

Meaning: Gather your closest friends and celebrate something ... anything!

Symbolism: Three women dance in celebration, showing their appreciation for life.

Upright: celebration, and sharing

Reversed: overindulgence, and discord



Four

Meaning: Find some time to meditate, or at least rest; your emotions need soothing.

Symbolism: A man contemplates three cups in front him while a divine hand delivers a new "need" he will have to address, but does not yet see, feel, or understand.

Upright: rest, and meditation

Reversed: boredom, and isolation



Five

Meaning: You have a disappointment you must accept; hidden possibilities have not yet revealed themselves.

Symbolism: The three cups in front of the man represent disappointing relationships. The two cups behind the man represent new hopes that will be enjoyed once he becomes aware of them.

Upright: disappointment, and sadness from loss

Reversed: depression, and despair



Six

Meaning: Reach out to someone you care about and share a memory, or create a new one.

Symbolism: A young man gives a cup to a young girl so they can experience the joy of sharing.

Upright: happy memories, and the positive legacy of childhood

Reversed: unhappy memories, and the negative legacy of childhood



Seven

Meaning: You have an important decision to make, and you need to know what motivates you to make the right choice.

Symbolism: A man has many choices before him; he needs to select the cup containing what he desires most.

Upright: choices, and motivations

Reversed: wishful thinking, and inaction



Eight

Meaning: You must let go of someone that was once emotionally important to you; the relationship or situation is empty.

Symbolism: A man walks away from eight cups, leaving behind unwanted and empty relationships that filled his life with joy long ago.

Upright: letting go, and moving on

Reversed: denial, and attempts at bargaining for something now worthless



Nine

Meaning: Embrace and accept what truly makes you happy. Your fulfillment is most important right now.

Symbolism: A regal woman sits on her throne, ready to share her abundance with others.

Upright: contentment, and self-satisfaction

Reversed: arrogance, and selfishness



Ten

Meaning: Profound joy in relationship is what you need or need to appreciate (if you have it). Happiness with a partner is key.

Symbolism: A family plays outside under a rainbow with ten cups sitting on it; their life is full and joyous.

Upright: mature love, and blessed union

Reversed: disagreements, and unhappiness in relationship



Page

Meaning: Emotions are strong but flowing wildly; they need a proper container.

Symbolism: A young man, full of emotions, awaits guidance for his passion; he needs to find something or someone to love.

Upright: imagination, and charisma

Reversed: emotionally stunted, and confused



Knight

Meaning: The warrior carries a cup with an important elixir or cure, to be delivered where it is needed, regardless of the challenges.

Symbolism: A young man, riding his loyal steed, carries his cup in search of true love.

Upright: romance, and seeking what you love

Reversed: possessive, and clingy



Queen

Meaning: You need to act with conviction regarding a significant relationship or emotionally charged situation.

Symbolism: A regal female sits upon a throne by the sea with an ornate chalice in her hand, contemplating the cup before her. She is a symbol of emotional conviction.

Upright: nurturing, and emotionally supportive

Reversed: passive aggressive, and overly sensitive



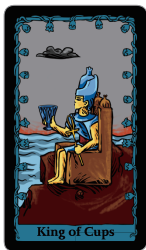
King

Meaning: Accept and embrace your responsibility for the care of others as your way to be empowered and lead.

Symbolism: A wise man sits on a throne by the sea, contemplating the cup he holds. He is a symbol of compassionate leadership.

Upright: influential, and responsible

Reversed: narcissistic, and cruel



The Suit of Swords

The Suit of Swords is associated with the element of air, representing intellect, logic, thought, and decisions. Since this suit deals with the mind, many of the cards reflect the dangers of negative thinking and poor decision-making. When these cards appear in a reading, they often provide a warning for the Querent.

Ace

Meaning: Time to decide; consider a new way of thinking; use logic regarding the situation or relationship.

Symbolism: A divine hand holds a single sword upright over the land, indicating the decisions that will need to be made by its people and rulers.

Upright: new thoughts, and logic

Reversed: ignorance, and misinformation



Two

Meaning: Be at peace with your decisions; do not look back or revisit decisions that brought you to this point.

Symbolism: A woman sits blindfolded, holding two swords, awaiting problems she will help solve and conflicts she will help negotiate.

Upright: an important decision, and need for logical resolution.

Reversed: self-deception, and obstinance



Three

Meaning: You are getting mixed results and must find a way to face the frustration and sorrow of the situation or relationship.

Symbolism: Three swords pierce a heart in a storm; the heart is whole, but filled with pain from each sword.

Upright: sorrow, and cognitive dissonance

Reversed: self-pity, and anxiety



Four

Meaning: You need a mental break; you need to disengage to save your sanity.

Symbolism: A entombed figure rests while those still living review his life and pray for him.

Upright: rest, and contemplation

Reversed: burnout, and stress



Five

Meaning: There is a loss or defeat you must accept and work to overcome.

Symbolism: A warrior collects the swords of the defeated after they have left the battlefield, vanquished, and heading home.

Upright: defeat, and argument

Reversed: despair, and distrust



Six

Meaning: You need to move from one “shore of thinking” to another; you are currently in-between and need to complete the journey.

Symbolism: A ferryman takes a woman and her son to a new land; the six swords represent the transition from an old way of thinking to a new one.

Upright: transition, and the old gives way to the new

Reversed: fear of the unknown, and forced change in thinking



Seven

Meaning: Time to take your ideas and thoughts elsewhere; you may need to do so quietly and secretly.

Symbolism: A thief carries five swords away in the hopes of using them for his own profit. He leaves two swords behind in his haste to escape.

Upright: secrecy, and stealth

Reversed: theft, and deception



Eight

Meaning: You must address negative thinking, anxiety, and self-denial or remain trapped in a mental downward spiral.

Symbolism: A woman is bound and blindfolded, surrounded by eight swords showing us how completely trapped she is.

Upright: trapped, and restricted

Reversed: victimhood, and hopelessness



Nine

Meaning: There is a fear you need to face; this card also warns you to protect yourself from the cruelty of others.

Symbolism: A man wakes from a nightmare with nine swords above him, indicating that he must take care of himself.

Upright: warning, and foreboding

Reversed: torment, and cruelty



Ten

Meaning: A warning card telling you that you need to accept that a situation or relationship is ruined and it's time to move on.

Symbolism: A man lies on the ground run through by ten swords; he will have to be reincarnated to fix what went wrong in his life.

Upright: warning to change your thinking, and “the writing is on the wall”

Reversed: destruction, and ruin



Page

Meaning: Lots of ideas, but no focus. Great energy for generating new thoughts, but eventually choices must be made.

Symbolism: A young man wants to be a warrior, but he needs training and a purpose.

Upright: curious, and excited

Reversed: easily distracted, and unfocused



Knight

Meaning: Use clear-headed and logical thinking to achieve your goals; be decisive.

Symbolism: A warrior rides his steed into battle with clear purpose.

Upright: clarity, and decisiveness

Reversed: brash decision-making, and fanaticism



Queen

Meaning: The situation or relationship calls for detached and logical thinking; be strategic.

Symbolism: A regal woman sits on her throne, ready to answer questions and offer guidance with her wisdom and critical thinking.

Upright: strategic, and just

Reversed: cold hearted, and insensitive



King

Meaning: You oversee the decision and do not need input from others; make your choice and inform others once you have decided.

Symbolism: A wise man makes important decisions; his sword represents his clarity and intention to act upon his choices.

Upright: the final decision-maker, and judge

Reversed: intimidating, and argumentative



The Suit of Pentacles

The Suit of Pentacles is associated with the element of earth, representing prosperity, health, security, and stability. Pentacles deal with tangible possessions. Money may be the first thing that comes to mind with this suit, but the cards more generally refer to the material world and what we need to take care of ourselves.

Ace

Meaning: Now is the time to start something that will be real in the world.

Symbolism: A single pentacle is offered to humanity by a divine hand, representing the potential to affect the material world.

Upright: investment, and getting started

Reversed: delay, and resistance to change



Two

Meaning: Time to experiment and try different actions to produce better results.

Symbolism: A man dances with two pentacles in his hands, representing the constant change needed to keep the material world alive and flowing.

Upright: adaptability, and activity

Reversed: interference, and stagnation



Three

Meaning: Consistent hard work is needed in order to succeed and push forward.

Symbolism: The architect and investor show the builder the plans he needs to follow to create what they want.

Upright: creativity, and teamwork

Reversed: missing skill, and incompetence



Four

Meaning: Be careful with your resources; it is a good time to save and be conservative with finances.

Symbolism: A man sits on a throne; he has four pentacles which represent the status that proper behavior and hard work achieve in the material world.

Upright: conservationing and cautiousness

Reversed: miserliness, and hoarding



Five

Meaning: Be prepared to face material difficulty; you may need to ask for help or borrow money to get through a difficult time.

Symbolism: Two men seek shelter from the storm but cannot stop to rest; they must keep going.

Upright: debt, and illness

Reversed: loss of resources, and persistent health problems



Six

Meaning: Share your wealth and success; be grateful for what you have achieved.

Symbolism: A man of wealth and means determines who is worthy to receive what he offers; he uses the scales to make sure what he gives is fair.

Upright: shared wealth, and valued role in community

Reversed: greed, and stinginess



Seven

Meaning: Time to consider how you will invest your success; put resources back into what you have that is successful, or start a new venture.

Symbolism: A man tends a bush of pentacles; his hard work has paid off, and he has plenty for himself and to sell.

Upright: long-term planning, and dedicated persistence

Reversed: lack of vision, and wastefulness



Eight

Meaning: Use your skill and experience to improve your financial status and improve your security.

Symbolism: An artisan perfects his craft making new pentacles of the finest design.

Upright: craftsmanship, and expertise

Reversed: deception regarding skill, and laziness



Nine

Meaning: Focus on your purpose and use it to attain the wealth you desire; be your best to earn the most.

Symbolism: A young woman shows the wealth of individual achievement and the positivity associated with a productive life.

Upright: financial independence, and empowerment

Reversed: arrogance, and pride



Ten

Meaning: Embrace or seek the fulfillment that comes with a partnership that will help you attain a great and safe life.

Symbolism: A family is enjoying a beautiful day out together.

Upright: long-term gains, and inheritance

Reversed: missed opportunities, and burdensome obligations



Page

Meaning: Experiment; try not to get lost in starting, but not finishing anything.

Symbolism: A young man needs to experiment so he can find his purpose and direction in life.

Upright: apprenticeship, and practice

Reversed: lack of ability, and lack of ambition



Knight

Meaning: Time to take decisive action that leads to concrete results; find the solution and act on it.

Symbolism: A warrior travels to deliver the pentacle, a symbol of commerce between two kingdoms and among people.

Upright: goal-driven, and reliable

Reversed: stubborn, and misdirected



Queen

Meaning: Get your life in order; review your finances and make sure all important legal documents are in place. Assess your material life and fix anything that needs attention.

Symbolism: A regal female holds a pentacle in her hands, representing the abundance she can share with a worthy supplicant.

Upright: stability, and necessity

Reversed: instability, and desires leading to debt

King

Meaning: Use your wealth, status, and influence wisely; others look to you for leadership.

Symbolism: An older, successful man has attained enough wealth that others come to him to borrow money and receive guidance regarding their ambitions.

Upright: power, and prosperity

Reversed: corruption, and excess



