



Tarot Guidebook

Based on the tarot interpretations
of Arthur Edward Waite

*Modified, expanded, and edited
by Philip Young, PhD*



Introduction

Reading Tarot cards can reveal insights into your past, present, or future. The premise is simple: the Querent asks a question, and then the Reader draws the cards and interprets the results.

Tarot reading has been used for divination since the 1700s, and every Reader develops his or her method for interpreting the cards. There are some fundamentals, but Readers are encouraged to explore and develop their own approach.

The Deck

A standard tarot deck contains seventy-eight cards: twenty-two Major Arcana cards and fifty-six Minor Arcana cards. But this deck is unique because it has 97 cards, 19 additional cards beyond the standard 78. There are 12 cards for the signs of the zodiac, 3 additional Major Arcana cards (Prudence, Charity, and Faith), and 4 elemental cards (Air, Earth, Fire, and Water)

The Major Arcana cards represent the archetypal moments that everyone experiences on their journey through life. Everyone begins life as the Fool, and ends life as the Fool.

The Minor Arcana cards represent the actions, thoughts, feelings, and material struggles that we all encounter in our lives.

Four suits and fifty-six cards make up the

Minor Arcana. Face cards consist of the Knave/Page, Knight, Queen, and King. Each of the four elements belongs to a suit, represented by a specific object:

- Fire to Clubs/Wands/Staves
- Water to Cups
- Earth to Coins/Pentacles/Disks
- Air to Swords/Spears/Arrows

And each element corresponds to an aspect of human life:

- Fire/Action
- Water/Emotions
- Earth/Work
- Air/Thought.

Spreading the Cards

A spread is a layout for the Tarot cards which provides a framework for the reading. Spreads often follow a predefined theme where the position of the cards is relevant to how they are interpreted.

There are numerous different types of spreads. Certain spreads tend to work well for different types of questions. This guide will provide a starter spread, but you can research and find spreads for every type of question. As you become more experienced, consider developing your own unique spreads.

Three-Card Spread

The past/present/future three-card spread is the best and most used starting spread. This simple spread is ideal for novice Readers. Cards are drawn and read in the following order: 1) Past, 2) Present, and 3) Future.



Past



Present



Future

1. **The Past:** This card symbolizes the Querent's past experiences that pertain to the Querent's question.
2. **The Present:** This card represents the Querent's current situation.
3. **The Future:** This card indicates a possible future goal the Querent should strive for regarding their question or issue. The Querent can shape the future based on their thoughts and actions.

Tips

Become familiar with your deck by putting your thoughts in a journal. Take a page to write about each card, starting with the Fool and going through all seventy-eight cards.

Look at the pictures and use the explanations in this booklet to connect each card with one of your life experiences. Since the cards are archetypal, you have experienced all seventy-eight at least once. Write your corresponding life experience with each card in your journal.

The explanations in this booklet refer to the card being “upright” or “reversed”. After shuffling, drawing, and turning over the cards, some may be upright while others will be upside down (or reversed). Reversed cards turn the meaning “upside down.”

Pay attention to the symbolism in the artwork; the symbolism enhances, and

provides details, to the meaning of the cards.

Tarot cards are not deterministic and life is not fated. The future is never set.

Querents can always alter their future by changing their course of action, changing their thoughts, or adjusting their feelings.

The Major Arcana

The Fool (0)



THE FOOL

Meaning: The Fool represents a leap of faith, which is the beginning and ending of the Major Arcana journey we all take through life. We are the Fool. The Fool archetype is about curiosity and open-mindedness, going with the flow of life, and managing our way through the unknown.

Symbolism: A young man plays with two children. He engages with them “at their level”. He wears informal clothing and has a headdress with feathers, further indicating his less than serious approach to life.

Upright: optimism, a journey without a destination, a new beginning, curiosity, and potential

Reversed: foolishness, gullibility, and ignorance

The Magician (I)

I.



THE MAGICIAN

Meaning: The Magician represents choices and creative problem-solving, a connection between imagination and reality. The Magician archetype is the first encounter for the Fool, indicating that we all must make crucial decisions on our life journey.

Symbolism: A street performer shows a magic trick to the young men. His clothing mark him as an entertainer, rather than a business man. He uses skilled sleight-of-hand to amaze those watching him.

Upright: choices, problem-solving, diverse knowledge, solutions, and cleverness

Reversed: deception, conning, mistakes, something broken beyond repair, and failure

The High Priestess (II)

II.



THE HIGH PRIESTESS

Meaning: The High Priestess represents the knowledge and enlightenment that we attain overcoming difficulties. The High Priestess archetype is the second encounter for the Fool, indicating that we must learn about our intuition, how to trust it, and when to seek out guidance from others.

Symbolism: A regal young woman is ready to offer advice. In one hand is a scepter and in the other is a sphere, with a crescent moon on top, one indicating authority and the other, worldly experience. The moon is a symbol for intuition, which she uses in her counseling. She wears a plain crown, representing every day, rather than aristocratic, authority.

Upright: divination, wisdom from experience, insight, and counseling

Reversed: gossip, bad advice, incomplete knowledge, and misrepresentation

The Empress (III)

III.



THE EMPRESS

Meaning: The Empress represents the feminine divine, the essence of beauty, abundance, and nourishment. The Empress archetype is the third encounter for the Fool, teaching you about the natural world, how to care for the world, how to nurture yourself, and how to care for others.

Symbolism: A regal older woman is ready to give counsel to those who seek her out. Her scepter is longer, her sphere larger, and crown more ornate than those of the High Priestess. These differences show her greater experience and worldliness.

Upright: nurturing, abundance, the feminine divine, and sovereignty over the natural order.

Reversed: hardships, scarcity, barrenness, and neediness.

The Emperor (IV)

IIII.



THE EMPEROR

Meaning: The Emperor represents the masculine divine, the essence of command, order, and power. The Emperor archetype is the fourth encounter for the Fool, teaching us how to establish order from chaos, how to shape the natural world to our needs, and how to build civilization.

Symbolism: An older man sits ready to give orders to those who follow him. He holds a scepter and wears a crown to show his authority. The sphere represents the world and the bird of prey on the sphere is a symbol of his power.

Upright: authority, the rule maker, order, stability, and sovereignty over society and civilization

Reversed: abuse of power, cruelty, dictatorship, and narcissism.

The Hierophant (V)

V.



THE HIEROPHANT

Meaning: The Hierophant represents wisdom attained through scholarship and exploring the world, the learned knowledge we attain in our effort to make sense of life. The Hierophant archetype is the fifth encounter for the Fool, indicating that we need to go beyond intuition and emotion, and use intellect and experience to solve some problems. Or, we need to find someone with those qualities to help us.

Symbolism: A wise man of learning sits ready to dispense knowledge. He has a scepter and a crown, both indicating his authority. He also has a sphere, like the Emperor, but with a star on top, which represents his pursuit of wisdom rather than power.

Upright: wisdom, authority, knowledge, doctrine, and advice

Reversed: arrogance, elitism, hypocrisy, and charlatanism

The Lovers (VI)

VI.



THE LOVERS

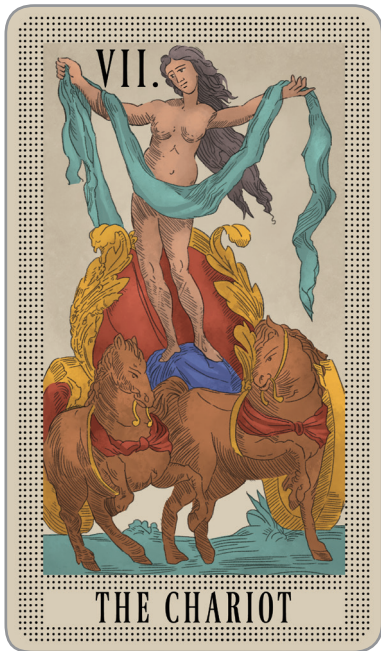
Meaning: The Lovers represents partnership, especially a profound connection with someone that is both intimate and romantic. The Lovers archetype is the sixth encounter for the Fool, indicating that we cannot fully experience life until we connect with someone intimately and deeply.

Symbolism: A young man kneels before the woman he loves as she places a crown upon his head, indicating that he will serve her in love. The cherub prepares to shoot the young man with an arrow to bind him to the woman.

Upright: commitment, status through union, connection, and soul mate

Reversed: jealousy, unfaithfulness, arguments, and separation or divorce

The Chariot (VII)



Meaning: The Chariot represents willpower and drive; the intense focus we need to establish our identities and stand out in some important and useful way. The Chariot archetype is the seventh encounter for the Fool, teaching us how important it is to have conviction and intensity in our lives.

Symbolism: A nude female rides in a chariot on full display for all to see. She is bold and unashamed, arms open, perfectly balanced as the charging horses pull her along.

Upright: victory, willpower, intensity, drive, and control

Reversed: anger, delay, indecision, and interference

Strength (VIII)

VIII.



STRENGTH

Meaning: Strength represents our fortitude to live life, overcome struggles, and persevere. The journey through life will require strength to live fully and completely. Strength, as an archetype, is the eighth lesson for the Fool, showing us that life is a marathon and not a sprint. We must find the strength within that will help us survive and thrive.

Symbolism: A young maiden sits on a stone wall next to a column. She waits for the right moment to act, knowing she will have the fortitude to face what comes her way.

Upright: power, courage, compassion, and gentle strength

Reversed: weakness, anger, abuse of power, and threat

The Hermit (IX)



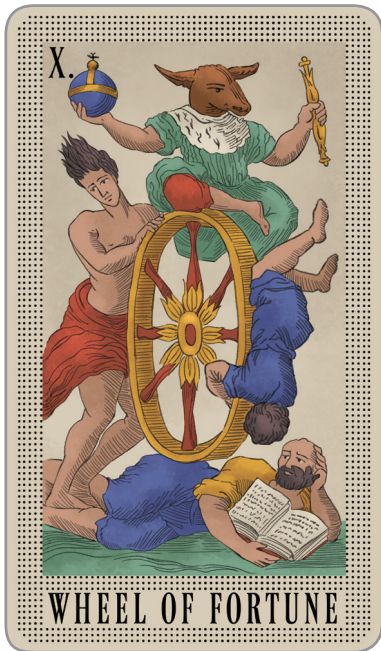
Meaning: The Hermit represents our individual pursuit for personal truth in a world of competing truths. The Hermit archetype is the ninth encounter for the Fool, teaching us that sometimes we must detach from the flow of life to discover ourselves, bringing what we learn in isolation back into the world of social connections.

Symbolism: An elderly man makes his way on crutches, not letting his infirmity stop him. The buck behind him is a symbol of virility and the hourglass with the arrow through it represents the wisdom gained over time (time's arrow).

Upright: introspection, discovery, wisdom, truth-seeking, and taking time away from society

Reversed: loneliness, escapism, depression, and being cast out

Wheel of Fortune (X)



Meaning: The Wheel of Fortune represents experiences and circumstances outside our control. The Wheel of Fortune archetype is the tenth encounter for the Fool, indicating that we exist in a dance between fate and free will. This card teaches the lessons of fate, the external world, and how others with more power than us force us to react.

Symbolism: Figures all around the wheel indicate the constant impact of youth, worldly pursuits, and knowledge. As the wheel turns and life changes, time remains the one constant influencing all circumstances.

Upright: what is inevitable, destiny, and the passage of time

Reversed: misfortune, powerlessness, and unpleasant circumstances

Justice (XI)

XI.



JUSTICE

Meaning: Justice represents detached decision-making, logic, and the power of knowledge outside emotions. Justice, as an archetype, is the eleventh teacher for the Fool, showing us the importance of objectivity and analysis for determining outcomes and making important decisions. Life can be fair if we act with integrity.

Symbolism: A wise woman sits ready to receive complaints and solve disputes. She holds a scale in one hand and a sword in the other. She will judge the complaint fairly (scales) and use her authority (sword) to see to it that her judgement is enforced.

Upright: detached decision-making, responsibility, consequences, logic, and cause and effect

Reversed: injustice, missing information, indecision, and bureaucracy

The Hanged Man (XII)



Meaning: The Hanged Man represents knowing sacrifice, when we realize we must accept a short-term difficulty for a long-term gain. The Hanged Man archetype is the twelfth encounter for the Fool, showing us the importance of devotion, surrender, and sacrifice as ways forward that are just as powerful as the willfulness of the Chariot lesson.

Symbolism: A young man hangs upside down, holding bags of money. He seeks knowledge and wisdom by changing his perspective, which is what happens when you view the world while upside down. The bags of money represent the weight of earthly matters keeping him from getting free.

Upright: knowing sacrifice, change in perspective, and patience

Reversed: helplessness, impatience, confusion, and selfishness

Death (XIII)

XIII.



DEATH

Meaning: Death represents endings in the cycle of life, and the power of regeneration. Death, as an archetype, is the thirteenth encounter for the Fool. This card reminds us that life is finite, which helps us appreciate how well, or poorly, we are doing in our pursuit of life experience and soul growth.

Symbolism: The skeletal figure of death collects souls. No one escapes, not the rich or poor, young or old. He uses his scythe to cull the human population, renewing the cycle of life and death.

Upright: death/rebirth, transformation, inevitability, and cycles

Reversed: arrogance, depression, hopelessness, and severe grief

Temperance (XIV)

XIII.



TEMPERANCE

Meaning: Temperance represents balance and equilibrium that has the chance to develop with greater life experience. Temperance, as an archetype, is the fourteenth encounter for the Fool, indicating that we need to step back, from time to time, and assess where we are to determine if we are in or out of balance.

Symbolism: A goddess pours water down from one urn into another, representing the constant flow of life from one container to another (a soul from one body to the next through reincarnation).

Upright: calm, health, well-being, balance, common ground, and harmonious action

Reversed: imbalance, disruption, anxiety, frustration, and pettiness

The Devil (XV)

XV.



THE DEVIL

Meaning: The Devil represents consequences we face as our choices become more significant the farther into life we travel. The Devil archetype is the fifteenth encounter for the Fool, teaching us that we are responsible for our lives and our choices. If we make selfish choices that harm others, we will not enjoy the outcomes.

Symbolism: Lucifer Morningstar, the Fallen One, walks the land searching for corrupt souls and souls to corrupt. His cloven feet, serpent belt, animal tail, horns, and deformed wings all represent the sins of humanity's bestial nature.

Upright: self-interest, temptation, consequences, and choice.

Reversed: unwise choices, lust, wanton abandon, and manipulation

The Tower (XVI)



Meaning: The Tower represents sudden, unexpected change that takes something we have built over time and quickly forces us to start over or reset. The Tower, as an archetype, is the sixteenth encounter for the Fool, teaching the lesson that life is a construct; it can be “blown up” at any time and force us to make unexpected adjustments.

Symbolism: A nude woman is thrust from her home, unexpectedly exposed to the world. Or, she is trying to escape, but caught just before she can be free. Either way, she is at the mercy of the man holding onto her.

Upright and Reversed: unexpected change, sudden catastrophe, and traditions failing

The Star (XVII)



Meaning: The Star represents hope, and vision for the future. What do we see as our life purpose and how do we get to it? The Star, as an archetype, is the seventeenth encounter for the Fool, indicating that we all need hope and optimism for the future. We need to have dreams to enjoy this life.

Symbolism: A priest or king rides the land offering hope to those who encounter him. He carries a golden chalice filled with a healing elixir he will use to cure the ill.

Upright: hope, inspiration, promise, purpose, and faith

Reversed: doubts, confusion, delusion, and despair

The Moon (XVIII)

XVIII.



THE MOON

Meaning: The Moon represents the feelings we need to explore and express. The Moon, as an archetype, is the eighteenth encounter for the Fool, illuminating our deepest feelings so we can understand the emotional framework that gets reinforced, suppressed, and shaped by our family and closest relationships.

Symbolism: A moon drawn to show its many phases sits above a wise man who is using it to tell time and mark the passing days of his life. He observes its many changes, following its cycle as a guide for understanding his soul's evolution.

Upright: dreams, positive emotions, intuition, and soul purpose

Reversed: delusion, nightmares, negative emotions, and despair

The Sun (XIX)

XVIII.



THE SUN

Meaning: The Sun represents revelation and the light of truth. The Sun, as an archetype, is the nineteenth teacher for the Fool. It teaches us the lesson of honest revelation and how we deal with clear truths in our lives. What do you learn when you see a situation, or a person, for what they really are?

Symbolism: The sun looks down upon a young couple enjoying an afternoon together out on the countryside. They are very much in love and the sun blesses them with its warm and bright light.

Upright: revelation, greatness, vitality, and truth

Reversed: excessive pride, arrogance, blocked action, and lies

Judgement (XX)



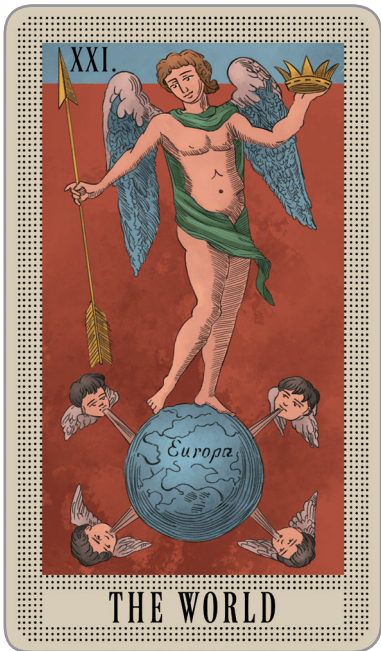
Meaning: Judgement represents significant and life-changing decisions, as well as the judgements from the world around us. Judgement, as an archetype, is the twentieth lesson for the Fool. This card teaches the importance and necessity of serious decisions at crucial times in our lives. Sometimes we get to make these judgements and sometimes they are made for us.

Symbolism: An angel blows her trumpets to call the departed souls for judgement. They answer her call, as they must, and will be judged to determine if they are to be punished or rewarded.

Upright: deciding for others, being judged, consequences, and closure

Reversed: prejudging, stereotyping, lazy thinking, and abuse of power

The World (XXI)



Meaning: The World represents the ending of a cycle to prepare for a new, repeating journey for the Fool. The World, as an archetype, is the twenty-first encounter for the Fool, showing us that life is constantly changing, and we are meant to build on our experiences. In this ending is another beginning.

Symbolism: An angel stands atop the world, holding an arrow and a crown. The arrow represents the ever forward passage of time and the crown represents the constantly changing leadership of the countries of the world. The cherubs blow upon the “four corners” of the globe.

Upright: fulfillment, completion, conclusion, the sum of your efforts, and success

Reversed: stagnation, failure, and final obstacle

Prudence (XXII)

XXII.



PRUDENCE

Meaning: Prudence represents a cautious and balanced approach to action in life. Prudence, as an archetype, is the twenty-second encounter for the Fool, showing us that life requires us to be self-reflective and thoughtful if we want to succeed.

Symbolism: A middle-aged woman stares at her reflection, contemplating her life so far. She has a headpiece highlighting her wisdom; she holds the tail of a serpent moving up to whisper secrets, about life, in her ear.

Upright: wise choices, caution, conservation, and patience

Reversed: reckless, impatient, and self-absorbed

Charity (XXIII)



Meaning: Charity represents our need to give back to the world in order to keep energy flowing in a positive way. Charity, as an archetype, is the twenty-third encounter for the Fool, showing us that life requires the more fortunate to help the less fortunate, so all can enjoy a happy life.

Symbolism: A middle-aged woman sits patiently ready to help any who ask for her blessing. She holds a flame in one hand, representing her life-giving energy. Her headpiece highlights her wisdom.

Upright: charity, generosity, and support for the less fortunate

Reversed: greed, turning a blind eye, and selfishness

Faith (XXIII)

XXIII.



FAITH

Meaning: Faith represents our need to believe in something, a higher power, civilization, and the wisdom of gathered knowledge. Faith, as an archetype, is the twenty-fourth encounter for the Fool, showing us that life needs purpose. Believing in something with conviction and faith helps us thrive and prosper.

Symbolism: A middle-aged woman sits ready to advise those who share her faith. She holds a spear, representing the clarity and sharpness of her belief. The tableau contains wisdom she has carved out for others to read and know. Her headpiece highlights her wisdom.

Upright: faith, conviction, purpose, and promise

Reversed: disbelief, skepticism, and confusion

The Astrological Signs

This deck is unique because it includes cards for the 12 signs of the Zodiac. Each sign represents energy and knowledge the Fool can experience to attain a full understanding of his or her journey through life.

Aries



Meaning: Aries is the first sign of the zodiac, ruled by the planet Mars, and ruling the First House. It is a male sign. Aries symbolizes action and daring. The Fool learns to be independent, maverick, and free-spirited from this sign.

Symbolism: The ram is the symbol for this sign. Here one is rearing in the middle of a field.

Upright: independence and freedom

Reversed: selfishness and recklessness

Taurus



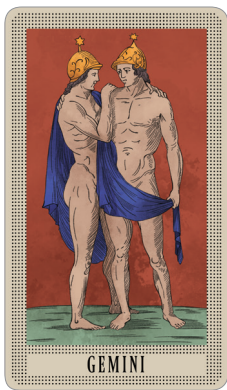
Meaning: Taurus is the second sign in the Zodiac, ruled by the planet Venus, and ruling the Second House. Taurus symbolizes fertility, stability, and resources. The Fool learns to be cautious, conservative, and traditional from this sign.

Symbolism: The bull is the symbol for this sign. Here one is standing in the middle of a field.

Upright: security and tradition

Reversed: stubbornness and stagnation

Gemini



Meaning: Gemini is the third sign in the Zodiac, ruled by the planet Mercury, and ruling the Third House. Gemini symbolizes communication, learning, and information. The Fool learns to be curious, open-minded, and communicative from this sign.

Symbolism: Twins are the symbol for this sign. Here are two brothers standing together, likely Romulus and Remus, the founders of Rome.

Upright: learning and negotiation

Reversed: distraction and gossip

Cancer



Meaning: Cancer is the fourth sign in the Zodiac, ruled by the Moon, and ruling the Fourth House. Cancer symbolizes family, emotional intelligence, and healing. The Fool learns to be nurturing, supportive, and compassionate from this sign.

Symbolism: The crab is the symbol for this sign. Here is a crab balancing itself on a table.

Upright: concern and compassion

Reversed: clingy and needy

Leo



Meaning: Leo is the fifth sign in the Zodiac, ruled by the Sun, and ruling the Fifth House. Leo symbolizes creativity, leadership, competition, and performance. The Fool learns to be a leader, creative, and playful from this sign.

Symbolism: The lion is the symbol for this sign. Here is a lion rearing up to fight.

Upright: leadership and confidence

Reversed: pettiness and insecurity

Virgo



Meaning: Virgo is the sixth sign in the Zodiac, ruled by the planet Mercury, and ruling the Sixth House. Virgo symbolizes nutrition, service, invention, and problem-solving. The Fool learns to be of service to others, methodical, and inventive from this sign.

Symbolism: The virginal angel is the symbol for this sign. Here is an angel visiting earth.

Upright: healing and problem-solving

Reversed: critical and deceptive

Libra



Meaning: Libra is the seventh sign in the Zodiac, ruled by the planet Venus, and ruling the Seventh House. Libra symbolizes the law, partnerships, and fairness. The Fool learns to be just, analytical, and balanced from this sign.

Symbolism: Scales are the symbol for this sign. Here is a scale with a fox on top and porcupine beneath.

Upright: decisive and fair

Reversed: indecisive and unfair

Scorpio



Meaning: Scorpio is the eighth sign in the Zodiac, ruled by Mars (traditionally) and Pluto (currently), and ruling the Eighth House. Scorpio symbolizes regeneration, transformation, and sexuality. The Fool learns to face life and death issues, understand his/her sexuality, and face trauma from this sign.

Symbolism: The scorpion is the symbol for this sign. Here is a scorpion above the water of a lake where a duck is swimming.

Upright: transformation and power

Reversed: destruction and abuse

Sagittarius



Meaning: Sagittarius is the ninth sign in the Zodiac, ruled by the planet Jupiter, and ruling the Ninth House. Sagittarius symbolizes wisdom, belief, and worldliness. The Fool learns to explore, think philosophically, and develop authority from this sign.

Symbolism: The centaur with a bow is the symbol for this sign. Here is a centaur hunting a wild boar.

Upright: adventure and exploring the wider world

Reversed: arrogance and authoritarianism

Capricorn



Meaning: Capricorn is the tenth sign in the Zodiac, ruled by the planet Saturn, and ruling the Tenth House. Capricorn symbolizes productivity, achievement, and responsibility. The Fool learns to be dutiful, productive, and financially abundant from this sign.

Symbolism: The sea-goat is the symbol for this sign. Here is a sea-goat floating on top of the sea with a staff, representing its authority.

Upright: goals and achievements

Reversed: greed and tyranny

Aquarius



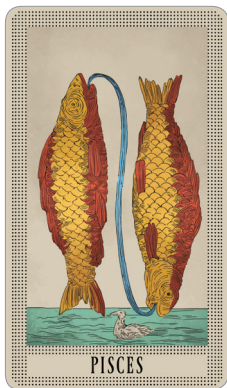
Meaning: Aquarius is the eleventh sign in the Zodiac, ruled by Saturn (traditionally) and Uranus (currently), and ruling the Eleventh House. Aquarius symbolizes community, science, and ideals. The Fool learns to be social, idealistic, and authentic from this sign.

Symbolism: Water pouring from an urn is the symbol for this sign. Here is a man watering his garden and preparing to prune the flowers.

Upright: involvement and participation

Reversed: fanaticism and apathy

Pisces



Meaning: Pisces is the twelfth sign in the Zodiac, ruled by Jupiter (traditionally) and Neptune (currently), and ruling the Twelfth House. Pisces symbolizes spirituality, imagination, and dreams. The Fool learns to be spiritual, visionary, and aware from this sign.

Symbolism: Two fish circling each other is the symbol for this sign. Here the two fish are connected by the water flowing from their mouths while they point in opposite directions.

Upright: dreams and empathy

Reversed: delusions and passivity

The Elements

This deck is unique because it includes cards for the 4 elements. Each element represents energy and knowledge the Fool can experience to attain a full understanding of his or her journey through life.

Fire

Meaning: Fire is the element associated with action, creativity, exploration, spirituality, adventure, destruction, and intensity.

Symbolism: A fire burns in a pyre; the animal inside the fire remains unharmed.

Upright: action and spiritual purification

Reversed: chaos and suppression



Water

Meaning: Water is the element associated with emotions, sympathy, empathy, compassion, dreams, imagination, delusion, and sadness.

Symbolism: A ship crosses the ocean; the day is clear and the wind is strong.

Upright: feelings and relationships

Reversed: depression and isolation



Earth

Meaning: Earth is the element associated with money, civilization, resources, food, shelter, traditions, and tribalism.

Symbolism: A tree grows above the water lines from the city while a sheep and wolf stare at one another across the waterway.

Upright: needs and resources

Reversed: lack and scarcity



Air

Meaning: Air is the element associated with intelligence, knowledge, learning, communication, laws, and lying.

Symbolism: Clouds are stacked on top of each other with stars interspersed between them. Two birds fly together and a creature rests at the bottom of the card.

Upright: communication and civilized rules

Reversed: confusion and misinformation



The Minor
Arcana

The Suit of Cups

The Suit of Cups is associated with the element of water, representing emotions, feelings, and relationships. Cups indicate what is happening in the heart rather than the head. Because these classical decks simply used a number of objects visually in the cards, we have added keywords to make the cards more functional for modern users.

Ace

Meaning: Open your heart to a new relationship or reinvigorate an old one.

Symbolism: An ornate urn with a crown floating above it and flowers growing beside it represent this card.

Upright: expressing emotions

Reversed: repressing emotions



Two

Meaning: Enjoy a mutual attraction and shared positive feelings with someone.

Symbolism: Two urns with ornate handles represent this card.

Upright: attraction

Reversed: aversion



Three

Meaning: Gather your closest friends and celebrate something ... anything!

Symbolism: Three urns, with a lion in the center, represent this card.

Upright: celebrating

Reversed: complaining



Four

Meaning: Find some time to meditate, or at least rest; your emotions need soothing.

Symbolism: Four urns, with a monkey looking into a mirror, represent this card.

Upright: contemplation

Reversed: anxiousness



Five

Meaning: You have a disappointment you must accept; hidden possibilities have not revealed themselves yet.

Symbolism: Five urns represent this card.

Upright: disappointing

Reversed: depressing



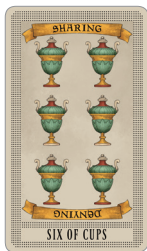
Six

Meaning: Reach out to someone you care about and share a memory or create a new one.

Symbolism: Six urns represent this card.

Upright: sharing

Reversed: denying



Seven

Meaning: You have an important decision, and you need to know what motivates you to make the choice you want or need to make.

Symbolism: Seven urns represent this card.

Upright: choice

Reversed: indecision



Eight

Meaning: You must let go of someone who was once emotionally important to you, but no longer has any value.

Symbolism: Eight urns represent this card.

Upright: letting go

Reversed: holding on



Nine

Meaning: Embrace and accept what truly makes you happy. Your fulfillment is most important right now.

Symbolism: Nine urns represent this card.

Upright: self-confidence

Reversed: arrogance



Ten

Meaning: Profound joy in relationship is what you need, or need to appreciate (if you have it). Happiness with a partner is key.

Symbolism: Ten urns represent this card.

Upright: fulfilled

Reversed: pretending



Page

Meaning: Emotions are strong but flowing wildly; they need a proper container.

Symbolism: A young woman holds an urn in front of her; she is symbol of youthful feelings.

Upright: imagination, and charisma

Reversed: emotionally stunted, and confused



Knight

Meaning: Pursuing something you love and using your imagination.

Symbolism: A winged centaur displays an urn; he symbolizes the imagination.

Upright: romance, and seeking what you love

Reversed: possessive, and clingy



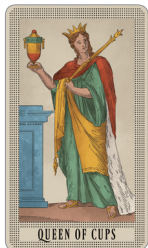
Queen

Meaning: You need to act with conviction regarding a significant relationship.

Symbolism: A regal female wearing a crown, holding a scepter, and an urn represents mature emotions and compassion.

Upright: nurturing, and emotionally supportive

Reversed: passive aggressive, and overly sensitive



King

Meaning: Accept and embrace your responsibility for the care of others as your way to be empowered and lead.

Symbolism: A wise man is seated; he has a crown, scepter, and an urn. He is a symbol of compassionate leadership.

Upright: influential, and responsible

Reversed: narcissistic, and cruel



The Suit of Pentacles

The Suit of Pentacles is associated with the element of earth, representing prosperity, health, security, and stability. Pentacles deal with tangible possessions. Money may be the first thing that comes to mind with this suit, but the cards more generally refer to the material world and what we need to take care of ourselves.

Ace

Meaning: Now is the time to start something that will be real in the world.

Symbolism: A single pentacle floats in the sky with a crown above it.

Upright: acting

Reversed: reacting



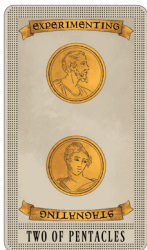
Two

Meaning: Time to experiment and try different actions to get better results.

Symbolism: Two coins, one with face of a man and the other with the face of a woman, are on this card.

Upright: experimenting

Reversed: stagnating



Three

Meaning: Hard and consistent work is what is needed to succeed and push forward.

Symbolism: Three coins are lined up on this card.

Upright: working

Reversed: procrastinating



Four

Meaning: Be careful with your resources; it's a good time to save and be conservative with finances.

Symbolism: A hunter rides an elephant with four coins around them.

Upright: saving

Reversed: hoarding



Five

Meaning: Be prepared to face material difficulty; you may need to ask for help or borrow money to get through a difficult time.

Symbolism: Five coins appear on this card.

Upright: struggling

Reversed: losing



Six

Meaning: Share your wealth and success; be grateful for what you have achieved.

Symbolism: Six coins appear on this card.

Upright: succeeding

Reversed: failing



Seven

Meaning: Time to consider how you will invest your resources; put them back into what you have that is successful, or start a new venture.

Symbolism: Seven coins appear on this card.

Upright: profiting

Reversed: poor investing



Eight

Meaning: Use your skill and experience to improve your financial status and your security.

Symbolism: Eight coins appear on this card.

Upright: expertise

Reversed: wasted talent



Nine

Meaning: Focus on your purpose and use it to attain the wealth you desire; be your best to earn the most.

Symbolism: Nine coins appear on this card.

Upright: achieving

Reversed: overextending



Ten

Meaning: Embrace or seek the fulfillment that comes with a partnership that will help you both attain a great and safe life.

Symbolism: Ten coins appear on this card.

Upright: wealth

Reversed: debt



Page

Meaning: Experiment; try not to get lost in starting but not finishing anything.

Symbolism: A young woman holds a single coin, which is the promise of her talent.

Upright: apprenticeship, and practice

Reversed: lack of ability, and lack of ambition



Knight

Meaning: Time to take decisive action that leads to concrete results; find the solution and act on it.

Symbolism: A half-man, half-beast carries a coin, seeking adventure.

Upright: goal-driven, and reliable

Reversed: stubborn, and misdirected



Queen

Meaning: Get your life in order; review your finances and make sure all important legal documents are in place. Assess your material life and fix anything that needs attention.

Symbolism: A regal female holds a pentacle beside her while she waits for people to approach her for guidance.

Upright: stability, and necessity

Reversed: instability, and desires leading to debt



King

Meaning: Use your wealth, status, and influence wisely; others look to you for leadership.

Symbolism: An accomplished man, sitting on a chair, has attained enough wealth that others come to him to borrow money and receive guidance to succeed in their earthly affairs.

Upright: power, and prosperity

Reversed: corruption, and excess



The Suit of Swords

The Suit of Swords is associated with the element of air, representing intellect, logic, thought, and decisions. Since this suit deals with the mind, many of the cards reflect the dangers of negative thinking and poor decision-making. When these cards appear in a reading, they often provide a warning for the Querent.

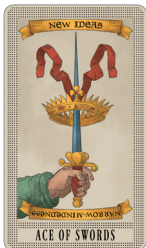
Ace

Meaning: Time to decide; consider a new way of thinking; use logic regarding the situation or relationship.

Symbolism: A hand holds a single sword upright with a crown around it, indicating the decisions that will need to be made by its people and rulers.

Upright: new ideas

Reversed: narrow-mindedness



Two

Meaning: Be at peace with your decisions; do not look back or revisit decisions that brought you to this point.

Symbolism: Two swords cross over a resting deer.

Upright: logic

Reversed: inconsistency



Three

Meaning: You are getting mixed results and must find a way to face the frustration and sorrow of the situation or relationship.

Symbolism: Three swords appear above a she-wolf providing milk to Remus and Romulus, the founders of Rome.

Upright: sorrow

Reversed: heartbreak



Four

Meaning: You need a mental break; you need to disengage to save your sanity.

Symbolism: Four swords appear on the card with a monkey at the top and unicorn at the bottom.

Upright: resting

Reversed: futility



Five

Meaning: There is a loss or defeat you must accept and work to overcome.

Symbolism: Five swords appear on the card above a fox in the hen house.

Upright: defeat

Reversed: despair



Six

Meaning: You need to move from one "shore of thinking" to another; you are currently in-between and need to complete the journey.

Symbolism: Six swords appear on the card, with a globe at the top and a cat at the bottom.

Upright: transition

Reversed: stagnation



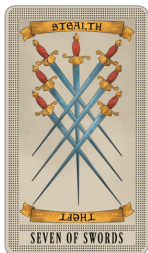
Seven

Meaning: It's time to take your ideas and thoughts elsewhere. You may need to do so quietly and secretly.

Symbolism: Seven swords appear on this card.

Upright: stealth

Reversed: theft



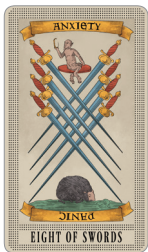
Eight

Meaning: You need to address and break a pattern of negative thinking. Seek advice from someone trustworthy.

Symbolism: Eight swords appear on the card, with a monkey at the top and a porcupine at the bottom.

Upright: anxiety

Reversed: panic



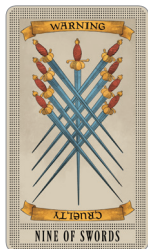
Nine

Meaning: There is a fear you need to face. This card also warns you to protect yourself from the cruelty of others.

Symbolism: Nine swords appear on this card.

Upright: warning

Reversed: cruelty



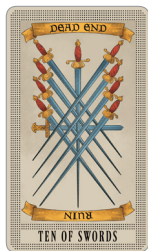
Ten

Meaning: A warning card indicating that you need to accept that a situation or relationship is ruined and it is time to move on.

Symbolism: Ten swords appear on this card.

Upright: dead end

Reversed: ruin



Page

Meaning: Lots of ideas, but no focus. Great energy for generating new thoughts, but eventually choices must be made.

Symbolism: A young warrior trains for battle.

Upright: curious, and excited

Reversed: easily distracted, and unfocused



Knight

Meaning: Use clear-headed and logical thinking to achieve your goals; be decisive.

Symbolism: A centaur, one of the fiercest warriors, enters the battle.

Upright: clarity, and decisiveness

Reversed: brash decision-making, and fanaticism



Queen

Meaning: The situation or relationship calls for detached and logical thinking; be strategic.

Symbolism: A regal woman sits ready to answer questions and offer guidance with her wisdom and critical thinking.

Upright: strategic, and just

Reversed: cold hearted, and insensitive



King

Meaning: You oversee the decision and do not need input from others; make your choice and inform others once you have decided.

Symbolism: A young king makes important decisions; his sword represents his clarity and decisiveness as a leader.

Upright: the final decision-maker, and judge

Reversed: intimidating, and argumentative



The Suit of Wands

The Suit of Wands is associated with the element of fire, representing passion, energy, willpower, and strength. The cards of this suit provide archetypes of human actions and reactions. The Fool takes his or her journey through this suit to make choices, seek adventure, and deal with challenges.

Ace

Meaning: You need to be inspired or excited; something or someone needs your spark.

Symbolism: A hand holds a single staff with a crown around it.

Upright: inspiring

Reversed: blocked



Two

Meaning: You need to choose a direction and take steps to move forward.

Symbolism: Two wands cross on this card, with a nude man at the top and a crane and fox at the bottom.

Upright: risk

Reversed: caution



Three

Meaning: The path is clear; you need to invest your time and energy to succeed.

Symbolism: Three wands appear on this card.

Upright: adventuring

Reversed: directionless



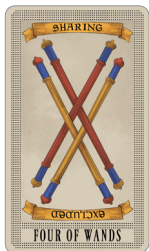
Four

Meaning: Gather friends and family around you and celebrate together.

Symbolism: Four wands appear on this card.

Upright: sharing

Reversed: excluded



Five

Meaning: Conflict and competition are necessary to keep moving forward.

Symbolism: Five wands appear on this card.

Upright: conflict

Reversed: danger



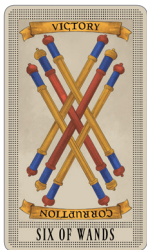
Six

Meaning: Victory and success are yours; be sure you act with dignity.

Symbolism: Six wands appear on this card.

Upright: victory

Reversed: corruption



Seven

Meaning: You are right; hold your ground. Any lack of integrity will be your downfall.

Symbolism: Seven wands appear on this card.

Upright: integrity

Reversed: hypocrisy



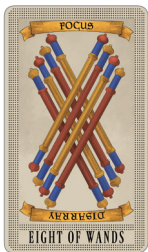
Eight

Meaning: Be focused and intense; let nothing distract you from your goal.

Symbolism: Eight wands appear on this card.

Upright: focus

Reversed: disarray



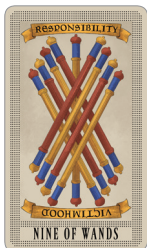
Nine

Meaning: You have a duty to uphold; others look to you as a role model.

Symbolism: Nine wands appear on this card.

Upright: responsibility

Reversed: victimhood



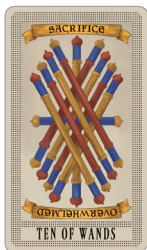
Ten

Meaning: It is time to say “no” and set limits; you do not have enough energy right now.

Symbolism: Ten wands appear on this card.

Upright: sacrifice

Reversed: overwhelmed



Page

Meaning: You have a lot of excitement, but you need to find some focus.

Symbolism: A young man full of energy is ready to act!

Upright: enthusiasm, and creativity

Reversed: unpredictability, and foolishness



Knight

Meaning: You need to go on an adventurous quest; get out of your routine and explore.

Symbolism: A centaur travels the land, carrying his staff on a quest for adventure.

Upright: driven, and passionate

Reversed: headstrong, and reckless



Queen

Meaning: You need to show confidence; if not, fake it until you feel it!

Symbolism: A powerful woman displays her energy confidently awaiting supplicants for her favor. Her staff shows her power to judge.

Upright: confident, and honorable

Reversed: insecure, and vindictive



King

Meaning: Show others how it is done; you need to lead by doing.

Symbolism: A powerful man is seated waiting for the right moment to act; he contemplates battle strategies.

Upright: role model, and independence

Reversed: selfish, and impatient

