

Tarot Guidebook

Based on the tarot interpretations
of Arthur Edward Waite

Modified, expanded, and edited
by Philip Young, PhD

The Angels Tarot Guidebook

Copyright © 2022 by Da Brigh Publishing

All rights reserved.

Created in the United States

Printed in China

Thank you for buying the authorized edition of this tarot deck and guidebook and for complying with copyright laws by not reproducing, scanning, or distributing any part of these materials in any form without permission.

ISBN: 978-0-9860891-3-8

UPC/GTIN 12: 850006058105

First Edition: April 2020

Da Brigh Publishing
Siren Imports, LLC
6003 Chapel Hill Road
Suite 141
Raleigh, NC 27607

Introduction

Reading Tarot cards can reveal insights into your past, present, or future. The premise is simple: the Querent asks a question, and then the Reader draws the cards and interprets the results.

Tarot reading has been used for divination since the 1700s, and every Reader develops his or her method for interpreting the cards. There are some fundamentals, but Readers are encouraged to explore and develop their own approach.

The Deck

The Tarot deck contains seventy-eight cards: twenty-two Major Arcana cards and fifty-six Minor Arcana cards.

The Major Arcana cards represent the archetypical moments that everyone experiences on their journey through life. Everyone begins life as the Fool, and ends life as the Fool.

The Minor Arcana cards represent the actions, thoughts, feelings, and material struggles that we all encounter in our lives.

Four suits and fifty-six cards make up the Minor Arcana. Face cards consist of the Page, Knight, Queen, and King.

Each of the four elements belongs to a suit, represented by a specific object:

- Fire to Clubs/Wands/Staffs
- Water to Cups
- Earth to Coins/Pentacles/Disks
- Air to Swords/Spears/Arrows

And each element corresponds to an aspect of human life:

- Fire/Action
- Water/Emotions
- Earth/Work
- Air/Thought.

The Spread

A spread is a layout for the Tarot cards which provides a framework for the reading. Spreads often follow a predefined theme where the position of the cards is relevant to how they are interpreted.

There are numerous different types of spreads. Certain spreads tend to work well for different types of questions. This guide will provide a starter spread, but you can research and find spreads for every type of question. As you become more experienced, consider developing your own unique spreads.

Three-Card Spread

The past/present/future three-card spread is the best and most used starting spread. This simple spread is ideal for novice Readers. Cards are drawn and read in the following order: 1) Past, 2) Present, and 3) Future.



Past



Present



Future

1. **The Past:** This card symbolizes the Querent's past experiences that pertain to the Querent's question.
2. **The Present:** This card represents the Querent's current situation.
3. **The Future:** This card indicates a possible future goal the Querent should strive for regarding their question or issue. The Querent can shape the future based on their thoughts and actions.

Tips

Become familiar with your deck by putting your thoughts in a journal. Take a page to write about each card, starting with the Fool and going through all seventy-eight cards.

Look at the pictures and use the explanations in this booklet to connect each card with one of your life experiences. Since the cards are archetypical, you have experienced all seventy-eight at least once. Write your corresponding life experience with each card in your journal.

The explanations in this booklet refer to the card being “upright” or “reversed”. After shuffling, drawing, and turning over the cards, some may be upright while others will be upside down (or reversed). Reversed cards turn the meaning “upside down.”

Pay attention to the symbolism in the artwork; the symbolism enhances, and provides details, to the meaning of the cards.

Tarot cards are not deterministic and life is not fated. The future is never set. Querents can always alter their future by changing their course of action, changing their thoughts, or adjusting their feelings.

The Major Arcana

The Fool (0)



Meaning: The Fool represents a leap of faith, which is the action our souls take when we are born and when we die. And, we make many leaps of faith throughout our lives. Therefore, as the Zero card, the Fool is the beginning and ending of the journey through the Major and Minor Arcana. We are the Fool. The Fool archetype is about curiosity and open-mindedness, going with the flow of life, and managing our way through the unknown.

Angel: Michael (Archangel)

Symbolism: Michael is a member of the Seraphim, the highest order of the Angels, and is known as a protector and the leader of God's armies against Lucifer. He walks joyously on his visit to earth; the dog near him is aware of his presence.

Upright: optimism, a new beginning, curiosity, and potential

Reversed: foolishness, gullibility, and ignorance

The Magician (I)



Meaning: The Magician represents choices and creative problem-solving, and how we form a connection between imagination and reality. The Magician archetype is the first encounter for the Fool, indicating that we all must make crucial decisions on our life journey.

Angel: Zaphkiel (Archangel)

Symbolism: Zaphkiel is the leader of the group of Angels known as the Thrones, who surround the Throne of God. His name means “God’s Knowledge”. All four Minor Arcana symbols are present, representing his command of all earthly knowledge.

Upright: choices, problem-solving, diverse knowledge, solutions, and cleverness

Reversed: conning, mistakes, lack of understanding, and arrogance

The High Priestess (II)



Meaning: The High Priestess represents the knowledge and enlightenment that we attain by overcoming difficulties. The High Priestess archetype is the second encounter for the Fool, indicating that we must learn about our intuition, how to trust it, and when to seek guidance from others.

Angel: Ariel (Archangel)

Symbolism: Ariel is a healing Angel and a member of the group of Angels known as the Virtues; they bring blessings and perform miracles. The scroll in her lap contains healing knowledge she gives to priestesses to help people in spiritual need.

Upright: divination, wisdom from experience, insight, and counseling

Reversed: gossip, bad advice, incomplete knowledge, and inexperience

The Empress (III)



Meaning: The Empress represents the feminine divine, the essence of creativity, abundance, and nourishment. The Empress archetype is the third encounter for the Fool, teaching us about the natural world, how to care for the world, what we need to thrive, and how to care for others.

Angel: Sandalphon (Archangel)

Symbolism: Sandalphon is the Angel who provides a bridge from humans to God through their prayers. She sits upon her throne, watchful for the prayers she needs to deliver to God and waits to deliver the answers from God.

Upright: nurturing, abundance, the feminine divine, and caretaking

Reversed: hardships, scarcity, barrenness, and neediness

The Emperor (IV)



Meaning: The Emperor represents the masculine divine, the essence of command, order, and power. The Emperor archetype is the fourth encounter for the Fool, teaching us how to establish order from chaos, how to shape the natural world to our needs, and how to build civilization.

Angel: Haniel (Archangel)

Symbolism: Haniel is the co-leader of the Principalities (with Netzach), a group of Angels who are the guardians of nations on earth. He sits on his throne presiding over the leaders of governments.

Upright: authority, the rule maker, order, stability, and the masculine divine

Reversed: abuse of power, cruelty, dictatorship, and narcissism

The Hierophant (V)



Meaning: The Hierophant represents wisdom attained through scholarship and exploring the world, the learned knowledge we attain in our effort to make sense of life. The Hierophant archetype is the fifth encounter for the Fool, indicating that we need to go beyond intuition and emotion, and use intellect and experience to solve some problems. Or, we need to find someone with those qualities to help us.

Angel: Metatron (Archangel)

Symbolism: Metatron is a member of the Seraphim, the highest order of the Angels, and is known as God's Scribe. He is shown here in church attire, which represents the priesthood, as keepers of God's knowledge on earth.

Upright: wisdom, authority, knowledge, doctrine, and advice

Reversed: arrogance, elitism, hypocrisy, and charlatanism

The Lovers (VI)



Meaning: The Lovers represents partnership, especially a profound connection with someone that is both intimate and romantic. The Lovers archetype is the sixth encounter for the Fool, indicating that we cannot fully experience life until we connect with someone deeply and intimately.

Angel: Chamuel (Archangel)

Symbolism: Chamuel is a Guardian Angel, who supports peaceful relationships between people, best expressed by lovers entering a union under the eyes of God through this Angel.

Upright: commitment, status through union, connection, and soul mate

Reversed: jealousy, unfaithfulness, arguments, and separation or divorce

The Chariot (VII)



Meaning: The Chariot represents willpower and drive; the intense focus we need to establish our identities and stand out in important and useful ways. The Chariot archetype is the seventh encounter for the Fool, teaching us the importance of acting with intensity and having conviction.

Angel: Gabriel (Archangel)

Symbolism: Gabriel is a member of the Cherubim, the second highest order of the Angels, who are God's inner circle. He rides in a chariot pulled by two sphinxes in full armor, indicating his role as a military leader in the fight for Heaven during the rebellion.

Upright: victory, willpower, intensity, drive, and control

Reversed: anger, delay, indecision, and interference

Strength (VIII)



Meaning: Strength represents our fortitude to live life, overcome struggles, and persevere. The journey through life will require strength to live fully and completely. Strength, as an archetype, is the eighth lesson for the Fool, showing us that life is a marathon and not a sprint. We must all find the strength within that will help us survive and thrive.

Angel: Camael (Archangel)

Symbolism: Camael is the leader of a group of Angels known as the Powers, who are the elite guard at the border between Heaven and Earth. She is shown here connecting with ferocious power of the lion.

Upright: power, courage, compassion, and gentle strength.

Reversed: weakness, anger, abuse of power, and threat

The Hermit (IX)



Meaning: The Hermit represents our individual pursuit for personal truth in a world of competing truths. The Hermit archetype is the ninth encounter for the Fool, teaching us that sometimes we must detach from the flow of life to “discover ourselves”, bringing what we learn in isolation back into the world of social connections.

Angel: Cassiel (Archangel)

Symbolism: Known as the Angel of Solitude, the light of his lantern and on the tip of his staff reveal how truth can often be found when one detaches from the world for a temporary period of time.

Upright: introspection, discovery, wisdom, truth-seeking, and taking time away from society

Reversed: loneliness, escapism, depression, and being cast out

Wheel of Fortune (X)



Meaning: The Wheel of Fortune represents experiences and circumstances outside our control. The Wheel of Fortune archetype is the tenth encounter for the Fool, indicating that we exist in a dance between fate and free will. This card teaches the lessons of fate, the external world, and how others, with more power than us, force us to react.

No Angel: God's Grace

Symbolism: This card has no Angel representative; instead, the card has a disc with powerful symbols and various beastly representations, which reflect the elements of life and how they impact humanity through God's Plan or Grace.

Upright: what is inevitable, destiny, and the passage of time

Reversed: misfortune, powerlessness, and unpleasant circumstances

Justice (XI)



Meaning: Justice represents detached decision-making, logic, and the power of knowledge without emotional influence. Justice, as an archetype, is the eleventh teacher for the Fool, showing us the importance of objectivity and analysis for determining outcomes and making important decisions. Life can be fair if we act with integrity.

Angel: Raguel (Archangel)

Symbolism: Raguel is known as the Angel of Justice, he brings peace and harmony. He holds scales, which represent fairness, and a sword, which is a symbol of his authority

Upright: detached decision-making, fairness, consequences, cause and effect, and logic

Reversed: injustice, missing information, indecision, and bureaucracy

The Hanged Man (XII)



Meaning: The Hanged Man represents knowing sacrifice, when we realize we must accept a short-term difficulty for a long-term gain. The Hanged Man archetype is the twelfth encounter for the Fool, showing us the importance of devotion, surrender, and sacrifice. Forgiveness is also a message contained within this card.

Angel: Raphael (Archangel)

Symbolism: Raphael is the leader of a group of Angels known as the Virtues, the Brilliant or Shining Ones, who bring blessings and perform miracles. He is the Angel of Healing. By hanging upside down, he shows he understands the suffering of humanity.

Upright: knowing sacrifice, change in perspective, and patience

Reversed: helplessness, impatience, confusion, and selfishness

Death (XIII)



Meaning: Death represents endings in the cycle of life, and the power of regeneration. Death, as an archetype, is the thirteenth encounter for the Fool. It reminds us that life is finite, which helps us strive to be better, not take experiences for granted, and see the importance of living a worthwhile life.

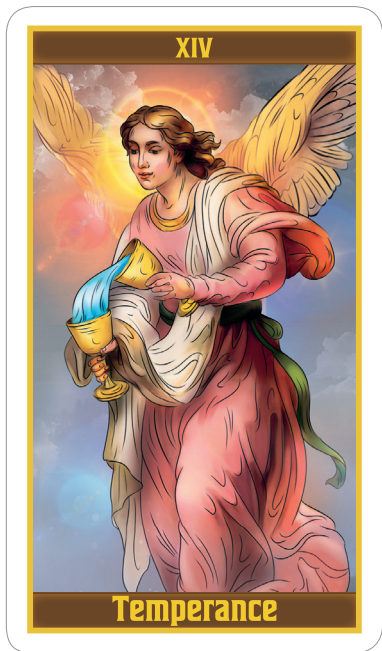
Angel: Azrael (Archangel)

Symbolism: Azrael is the Angel of Death who helps souls transition; in this depiction he wears the mask of a skeleton and carries a black flag, representing the void between life and death.

Upright: death/rebirth, transformation, inevitability, and cycles

Reversed: arrogance, depression, hopelessness, and severe grief

Temperance (XIV)



Meaning: Temperance represents the balance and equilibrium that has the chance to develop with greater life experience. Temperance, as an archetype, is the fourteenth encounter for the Fool. This card indicates the need to step back, from time to time, to assess where we are, and determine if we are in or out of balance.

Angel: Netzach (Archangel)

Symbolism: Netzach is the co-leader of the Principalities (with Haniel) and represents eternity, shown here in the flowing water between the two cups.

Upright: calm, well-being, balance, common ground, and harmonious action

Reversed: imbalance, disruption, anxiety, frustration, and pettiness

The Devil (XV)



Meaning: The Devil represents the consequences we face as our choices become more and more significant the further into life we travel. The Devil archetype is the fifteenth encounter for the Fool, teaching us that we are responsible for our lives and our choices. If we make selfish choices that harm ourselves and others, we will not enjoy the outcomes.

Angel: Lucifer (Fallen Archangel)

Symbolism: Lucifer Morningstar, God's Light, before his rebellion. The Pentagram is upside down and the chained figures are transforming into demons because of their choices. The flames of Hell light the dark realm of the Fallen One.

Upright: self-interest, temptation, consequences, and choice.

Reversed: unwise choices, lust, wanton abandon, and manipulation

The Tower (XVI)



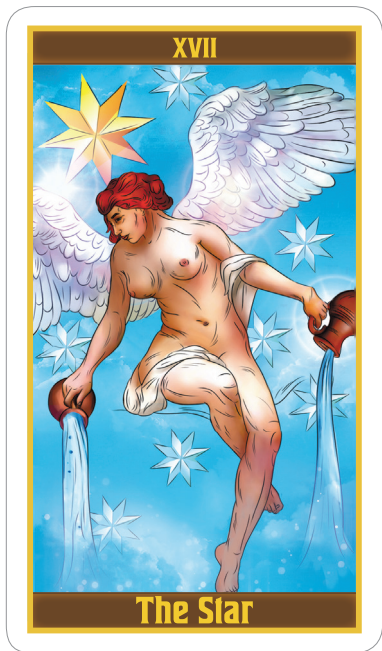
Meaning: The Tower represents a sudden unexpected change that takes something we have built over time and quickly forces us to start over or reset. The Tower, as an archetype, is the sixteenth encounter for the Fool, teaching the lesson that life is a construct that can be “blown up” at any time, forcing us to make unexpected adjustments.

Angel: Fallen Angels

Symbolism: Two of the Angels who fought alongside Lucifer fall from the Tower, which represents the safety of the Kingdom of Heaven, which is no longer available to those Angels who rebelled.

Upright and Reversed: unexpected change, sudden catastrophe, and blowing things up

The Star (XVII)



Meaning: The Star represents hope, and a positive vision for the future. What do we see as our life purpose and how do we get to it? The Star, as an archetype, is the seventeenth encounter for the Fool, indicating that we all need hope and optimism about the future. We need to have dreams to enjoy this life.

Angel: Phanuel (Archangel)

Symbolism: Phanuel is the Angel of Hope and Repentance. Flying among the stars, Phanuel pours celestial water to the earth, offering divine sustenance to those who embrace peace and keep hope alive.

Upright: hope, inspiration, promise, purpose, and faith

Reversed: doubts, confusion, delusion, and despair

The Moon (XVIII)



Meaning: The Moon represents the feelings we need to explore and express. The Moon, as an archetype, is the eighteenth encounter for the Fool, illuminating our deepest feelings so we can understand the emotional framework that gets reinforced, suppressed, and shaped by our family and closest relationships.

Angel: Raziel (Archangel)

Symbolism: Raziel is the Keeper of Secrets; and so, not depicted. His face resides in the Moon which illuminates the night. Animals of the night appear and show their respect.

Upright: dreams, positive emotions, intuition, and soul purpose

Reversed: delusion, nightmares, negative emotions, and despair

The Sun (XIX)



Meaning: The Sun represents revelation and the light of truth. The Sun, as an archetype, is the nineteenth teacher for the Fool, showing us the lesson of honest revelation and how we deal with clear truths in our lives. What do you learn when you see a situation or a person for what they really are?

Angel: Uriel (Archangel)

Symbolism: Uriel is one of the Seraphim, the highest order of Angels and the ones closest to God. Uriel is God's Light. He is shown as a young angel riding a powerful steed across the heavens.

Upright: revelation, greatness, vitality, and truth

Reversed: excessive pride, arrogance, blocked action, and lies

Judgement (XX)



Meaning: Judgement represents significant and life-changing decisions, as well as the judgements from the world around us. Judgement, as an archetype, is the twentieth lesson for the Fool. This card teaches the importance and necessity of serious decisions at crucial times in our lives. Sometimes we get to make these judgements and sometimes they are made for us.

Angel: Jophiel (Archangel)

Symbolism: Jophiel is the Angel of Wisdom, Understanding, and Judgement. The instrument is played to announce the arrival of new earthly souls into Heaven.

Upright: deciding for others, being judged, consequences, and closure

Reversed: prejudging, stereotyping, lazy thinking, and abuse of power

The World (XXI)



Meaning: The World represents the ending of a cycle to prepare for a new journey at a higher level of development and experience. The World, as an archetype, is the twenty-first encounter for the Fool, showing us that life is constantly changing and that we are meant to build on our experiences. In this ending is another beginning.

Angel: Sachiel (Archangel)

Symbolism: Sachiel is a member of the Cherubim, the second highest order of the Angels. Sachiel presides over wealth and charity. The garland around her represents the great achievements men and women can attain on earth to help them learn lessons that will test and strengthen the soul.

Upright: fulfillment, completion, conclusion, the sum of your efforts, and success

Reversed: stagnation, failure, and final obstacle

The Minor Arcana

The Suit of Cups

The Suit of Cups is associated with the element of water, representing emotions, feelings, and relationships. Cups indicate what is happening in the heart rather than the head.

Ace

Meaning: Open your heart to a new relationship or reinvigorate an old one.

Symbolism: A divine hand holds a cup in the air while a dove delivers a wafer into the water. This cup is a symbol of the flowing love of God.

Upright: new love, and strong emotions

Reversed: negative feelings, and emotional immaturity



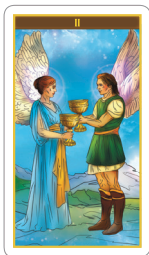
Two

Meaning: Enjoy a mutual attraction and shared positive feelings with someone.

Symbolism: Two Angels, one male and one female, exchange cups and connect through their mutual love of humanity and God.

Upright: attraction, and connection

Reversed: rejection, and unrequited love



Three

Meaning: Gather your closest friends and celebrate!

Symbolism: Three Angels celebrate the Joy of the Divine, sending love and light into the universe and down to earth.

Upright: celebration, collaboration, and sharing

Reversed: discord, and overindulgence



Four

Meaning: Find some time to meditate, or at least rest; your emotions need soothing.

Symbolism: While an Angel rests and contemplates what he has accomplished (the three cups floating before him), a fourth cup arrives with new energy and instructions for his next mission.

Upright: introspection, and rest

Reversed: boredom, and restlessness



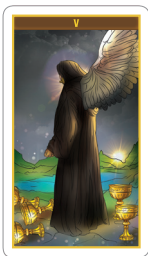
Five

Meaning: You have a disappointment you must accept; hidden possibilities have not revealed themselves yet.

Symbolism: The three cups in front of the Angel represent lost souls, but behind the Angel are two cups that represent souls who wish to be saved once the Angel becomes aware of them.

Upright: disappointment, regret, and sadness from loss

Reversed: resignation, letting go, and acceptance



Six

Meaning: Reach out to someone you care about and share a memory, or create a new one.

Symbolism: Two new Angelic entities mimic human childhood to feel the joy of family and the sharing of emotions, represented by the cup being exchanged.

Upright: sharing, friendship, and happy memories

Reversed: greediness, hostility, and unhappy memories



Seven

Meaning: You are facing an important decision; you need to know what motivates you to make the choice you want.

Symbolism: An Angel observes the various ways humans make choices, learning the different motivations of those he guards and guides spiritually.

Upright: choices, opportunities, and motivations

Reversed: wishful thinking, overwhelmed by choices, and inaction



Eight

Meaning: You must let go of something or someone that was once emotionally important to you but no longer has any value; the relationship or situation is empty.

Symbolism: An Angel strides away from eight cups, leaving behind souls who have rejected God to seek out souls who need his guidance.

Upright: moving on, release, and letting go

Reversed: abandonment, denial, and bargaining for something now worthless



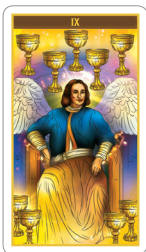
Nine

Meaning: Embrace and accept what truly makes you happy. Your fulfillment is most important right now.

Symbolism: An Angel sits on his throne, fully satisfied with his role in God's divine scheme. He is complete.

Upright: contentment, gratitude, and satisfaction

Reversed: dissatisfaction, arrogance, and selfishness



Ten

Meaning: Profound joy in relationship is what you need or need to appreciate (if you have it). Happiness with a partner is key.

Symbolism: Four Angels mimic a human family to experience the joy humanity expresses and experiences through family.

Upright: blessed union, mature love, and harmony

Reversed: disagreement, immature love, and disharmony



Page

Meaning: Emotions flow wildly; you need to learn proper boundaries.

Symbolism: A Guardian Angel awaits instructions from the divine, and is ready to respond to the prayers of lost souls.

Upright: imagination, curiosity, and charisma

Reversed: confused, and emotionally stunted



Knight

Meaning: Follow your passion; pursue your dreams.

Symbolism: The warrior Angel carries the divine love of God to humanity, riding his steed over land and sea.

Upright: romance, passion, and seeking what you love

Reversed: jealousy, possessiveness, and anger



Queen

Meaning: You need to act with conviction regarding a significant relationship.

Symbolism: A regal female Angel sits upon a throne in a blue dress, contemplating the cup before her, with her feet and robes in the water. She is a vessel for God's divine love, and answers prayers for mothers.

Upright: nurturing, and emotionally supportive

Reversed: vindictive, passive aggressive, and overly sensitive



King

Meaning: Accept and embrace your responsibility for the care of others as your way to be empowered and lead.

Symbolism: A wise, elder Angel presides over the sense of responsibility humans have and should have over their fellow men and women. He answers the prayers of fathers.

Upright: responsibility, diplomacy, and wisdom

Reversed: guilt, narcissism, and cruelty



The Suit of Pentacles

The Suit of Pentacles is associated with the element of earth, representing prosperity, health, security, and stability. Pentacles deal with tangible possessions. Money may be the first thing that comes to mind with this suit, but the cards refer more generally to the material world and what we need to take care of ourselves.

Ace

Meaning: Time to plant a seed, start a new job, buy a new house, or move to a new location.

Symbolism: A single pentacle is offered to humanity by a divine hand, representing humankind's influence over the material world.

Upright: investment, manifesting, and getting started

Reversed: debt, blocked, and delay



Two

Meaning: Experiment and try different actions to get better results.

Symbolism: An Angel descends to deliver two pentacles to humanity, representing the constant change experienced by living on earth.

Upright: routine, adaptability, and choices

Reversed: habit, stagnation, and indecision



Three

Meaning: Hard and consistent work is what is needed to learn, grow, and succeed.

Symbolism: An Angel is hard at work making new pentacles, representing the grace that comes with consistent effort.

Upright: hard work, dedication, and teamwork

Reversed: laziness, and incompetence



Four

Meaning: Be careful with your resources; it is a good time to save and be conservative with finances.

Symbolism: This Angel sits on a throne and has four pentacles to represent the status that proper behavior brings in the material world.

Upright: savings, and conservation

Reversed: hoarding, and miserliness



Five

Meaning: Be prepared to face material difficulty; struggling on your own.

Symbolism: Two Angels act as guardians for lost souls who are outside the church and in need of material support.

Upright: perseverance, and persistence

Reversed: hardship, and rejection



Six

Meaning: Share your wealth and success; be grateful for what you have achieved.

Symbolism: The Angel in this card answers the prayers of the needy with material blessings that will help the destitute recover.

Upright: charity, success, and generosity

Reversed: greed, and stinginess



Seven

Meaning: Time to consider how you will invest in your success; put resources back into what is already successful or start a new venture.

Symbolism: An Angel tends a bush of pentacles; the one on the ground to his left represents a new task he can take up on behalf of humanity.

Upright: abundance, opportunity, and long-term planning

Reversed: wastefulness, and limited success



Eight

Meaning: Use your skill and experience to improve your financial status.

Symbolism: An Angel perfects his craft making new pentacles of the finest design, showing the grace in expertise.

Upright: expertise, mastery, and craftsmanship

Reversed: obsolete, undervalued, and poor quality



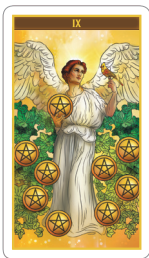
Nine

Meaning: Focus on your purpose and use it to attain the wealth you desire; be your best to earn the most.

Symbolism: An Angel, with the nine pentacles, shows the wealth of individual achievement and the positivity associated with a productive life.

Upright: successful, financial independence, and empowerment

Reversed: workaholic, or wastefulness



Ten

Meaning: Seek or embrace the fulfillment that comes with a partnership that will help you both attain a great and safe life.

Symbolism: The Angels portraying a family show the abundance of procreation and the blessing of offspring.

Upright: inheritance, and long-term gains

Reversed: obligations, missed opportunities, and burdens



Page

Meaning: Experiment; try new activities until you find the one that fits your long-term goals.

Symbolism: An Angel waits for instructions from God to intercede on earth, or for a prayer request for help with an issue in the material world.

Upright: practice, and apprenticeship

Reversed: procrastination, and lack of ambition



Knight

Meaning: Time to take decisive action that leads to concrete results; find the solution and act on it.

Symbolism: An Angelic knight travels to deliver his pentacle, which is a symbol of good works in heaven and on earth.

Upright: reliable, goal-driven, and self-disciplined

Reversed: stubborn, and misdirected



Queen

Meaning: Get your life in order; assess your material life and fix anything that needs attention.

Symbolism: A regal female Angel offers the pentacle to a worthy human in the hopes the man or woman will build something of lasting value on earth.

Upright: stability, management, and providing

Reversed: instability, and desires leading to debt



King

Meaning: Use your wealth, status, and influence wisely; others look to you for leadership.

Symbolism: The elder male Angel awaits the supplication of worthy humans as they approach him for help with their material concerns and ambitions.

Upright: prosperity, and power

Reversed: corruption, dictating, and excess



The Suit of Swords

The Suit of Swords is associated with the element of air, representing intellect, logic, thought, and decisions. Since this suit deals with the mind, many of the cards reflect the dangers of negative thinking and poor decision-making. When these cards appear in a reading, they often provide a warning for the Querent.

Ace

Meaning: Time to make decision; consider a new way of thinking; or use logic regarding the situation or relationship.

Symbolism: A divine hand holds a single sword upright with a crown around the tip, representing the decisive thought needed to achieve status and power.

Upright: ideas, logic, and clarity

Reversed: ignorance, and misinformation



Two

Meaning: Be at peace with your decisions; do not look back or revisit decisions that brought you to this point.

Symbolism: An Angel sits blindfolded holding two swords with arms crossed, representing the clarity of thought that comes when one is not distracted by appearances.

Upright: decision, and moving forward.

Reversed: self-deception, and obstinance



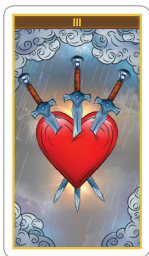
Three

Meaning: A situation or relationship is causing you heartache and you need to address the problem.

Symbolism: Three swords pierce a heart in a storm; the heart is whole but filled with pain from each sword.

Upright: sorrow, and heartache

Reversed: heartbreak, and pity



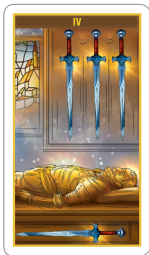
Four

Meaning: You need a mental break; you need to disengage to “save your sanity.”

Symbolism: A knight rests, and his glowing energy represents his etheric field in need of recharging.

Upright: contemplation, and meditation

Reversed: burnout, and stress



Five

Meaning: There is a loss or defeat you must accept and work to overcome.

Symbolism: An Angel collects the swords of the defeated after Azrael has collected their souls.

Upright: defeat, and argument

Reversed: despair, and distrust



Six

Meaning: You need to move from one “shore of thinking” to another; you are currently in-between and need to complete the journey.

Symbolism: An Angel ferries a mother and child to a “promised” land; the six swords represent the new opportunities in front of them.

Upright: transition, and the old gives way to the new

Reversed: resistance, fear of the unknown, and forced change in thinking



Seven

Meaning: Time to take your ideas and thoughts elsewhere; you may need to do so quietly and secretly.

Symbolism: An Angel steals swords to prevent a fight, forcing the owners to negotiate.

Upright: stealth, and secrecy

Reversed: deception, and theft



Eight

Meaning: Your own thinking and worry is trapping you; seek advice from someone trustworthy and accomplished.

Symbolism: An Angel is bound and blindfolded, representing the limits of rational thought when considering spiritual issues.

Upright: restricted, and trapped

Reversed: hopelessness, and victimhood



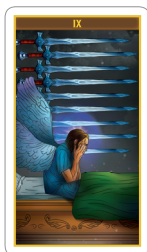
Nine

Meaning: There is a fear you need to face; this card also warns you to protect yourself from the cruelty of others.

Symbolism: A Fallen Angel weeps for his loss of the Glory of Heaven.

Upright: warning, and foreboding

Reversed: torment, and cruelty



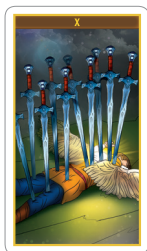
Ten

Meaning: A warning card, telling you to accept that a situation, or relationship, is ruined and it's time to move on.

Symbolism: One of the rebel Angels has been slain, showing the consequences of the rebellion against Heaven.

Upright: ruin, and destruction

Reversed: last chance, and escape



Page

Meaning: Lots of ideas, but no focus. Great energy for generating new thoughts, but eventually choices must be made.

Symbolism: An Angel, full of ideas and thought, is waiting for direction from God or a request, through prayers, from a human.

Upright: curious, and open-minded

Reversed: distracted, and unfocused



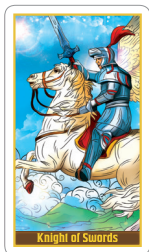
Knight

Meaning: Use clear-headed and logical thinking to achieve your goals; be decisive.

Symbolism: A warrior Angel rides his white steed, heading into battle with divine purpose.

Upright: decisive, and mentally sharp

Reversed: fanatical, and brash



Queen

Meaning: The situation or relationship calls for detached and logical thinking; be strategic.

Symbolism: A regal Angel sits ready to answer questions and offer guidance with her wisdom.

Upright: strategic, and just

Reversed: insensitive, and cold-hearted



King

Meaning: You oversee the decision and do not need input from others; make your choice and inform others once you have decided.

Symbolism: An elder Angel makes important decisions and his sword represents his divine authority.

Upright: visionary, and wisdom

Reversed: authoritarian, and intimidating



The Suit of Wands

The Suit of Wands is associated with the element of fire, representing passion, energy, willpower, and inspiration. The cards of this suit provide archetypes of human actions and reactions. The Fool takes his or her journey through this suit to make choices, seek adventure, and deal with challenges.

Ace

Meaning: You need to be inspired or excited; something or someone needs your spark.

Symbolism: An Angel holds a branch as a symbol of what is possible; the light of the sun shines just behind the hand, representing divine inspiration.

Upright: inspiring, and spark

Reversed: uninspiring, and dull



Two

Meaning: You need to choose a direction and take steps to move forward.

Symbolism: An Angel holds the world in one hand and staff in the other, representing new possibilities. The staff behind the Angel represents what has already been accomplished.

Upright: choosing, and acting

Reversed: hesitating, and fear



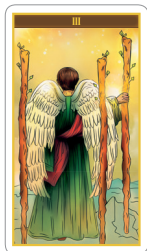
Three

Meaning: The path is clear and you need to invest your time and energy to succeed.

Symbolism: The Angel holds one staff in hand, while two staffs are behind the Angel. Much has been accomplished, but there is more to do.

Upright: taking off, and adventure

Reversed: delays, and broken promises



Four

Meaning: Gather friends and family around you and celebrate together.

Symbolism: Two humans approach a space for celebration and gathering, where they will show their gratitude towards God.

Upright: celebration, and socializing

Reversed: irresponsibility, and insincerity



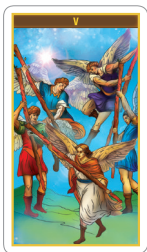
Five

Meaning: Conflict and competition are necessary to keep moving forward.

Symbolism: The battle for Heaven is shown here in the struggle among the Angels before the losing side fell.

Upright: competition, and conflict

Reversed: trouble-making, and aggressiveness



Six

Meaning: Victory and success are yours; be sure to act with dignity.

Symbolism: One of the leaders of the successful defense of Heaven is getting recognition.

Upright: victory, and desires fulfilled

Reversed: failure, and public humiliation



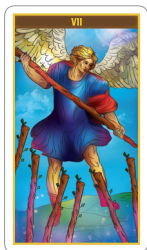
Seven

Meaning: You are right; hold your ground. Any lack of integrity will be your downfall.

Symbolism: One of the Angels defending Heaven holds the higher ground and has the superior strength of God to help him resist the Angels who would eventually fall.

Upright: valor, and integrity

Reversed: treachery, and lack of conviction



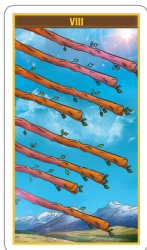
Eight

Meaning: Be focused and intense; let nothing distract you from your goal.

Symbolism: Eight staffs (wands) fly in a symmetrical pattern, representing clarity of direction and intent.

Upright: focus, and intensity

Reversed: frustration, and misdirection



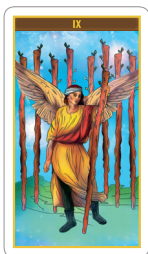
Nine

Meaning: You have a duty to uphold; others look to you as a role model.

Symbolism: An Angel defending Heaven remains steady in the face of adversity, resolved to set an example to others.

Upright: loyalty, and discipline

Reversed: disloyalty, and undisciplined



Ten

Meaning: It is time to say “no” and set limits; you do not have enough energy right now.

Symbolism: Ten wands weigh heavily in the Angel’s arms, but the situation calls for persistence and sacrifice; the wands are a burden that must be carried.

Upright: obligations, and devotion

Reversed: burdens, and oppression



Page

Meaning: You have a lot of excitement, but you need to find some focus.

Symbolism: A Guardian Angel waits for the opportunity to help an earthly soul.

Upright: enthusiasm, and creativity

Reversed: unpredictability, and foolishness



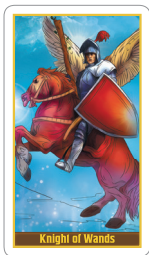
Knight

Meaning: You need to go on an adventurous quest; break out of your routine and explore.

Symbolism: A warrior Angel rides on his quest to deliver God's message.

Upright: adventuring, and exploring

Reversed: reckless, and foolish



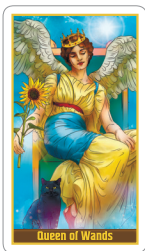
Queen

Meaning: You need to show confidence; if not, fake it until you feel it!

Symbolism: A powerful female Angel displays her energy confidently dressed in the bright yellow of the radiant sun and holding a sunflower. She contemplates the divine plan.

Upright: confident, and honorable

Reversed: insecure, and narcissistic



King

Meaning: Show others how it is done; lead by doing.

Symbolism: A powerful male Angel is seated on a throne, but ready to act; he is the divine personification of God's energy and spirit.

Upright: maverick, and independent

Reversed: impatient, and selfish



